

Historic, Archive Document

Do not assume content reflects current scientific knowledge, policies, or practices.

62.47

NEOSHO NURSERIES COMPANY

NEOSHO,
MISSOURI

LIBRARY
RECEIVED
★ JAN 31 1951 ★
U. S. Department of Agriculture

ALL-AMERICA ROSE
COLLECTION
Cat. No. 810
1 each of: Peace, Capistrano,
Forty-niner, Crimson Glory.
All 4 for \$6.00
Full descriptions pages 18-19.



PEACE (Pat. No. 591)
Cat. No. 104
Each \$2.00; 3 for \$5.00



CAPISTRANO (Pat. No. 992)
Cat. No. 108
Each \$2.00; 3 for \$5.00



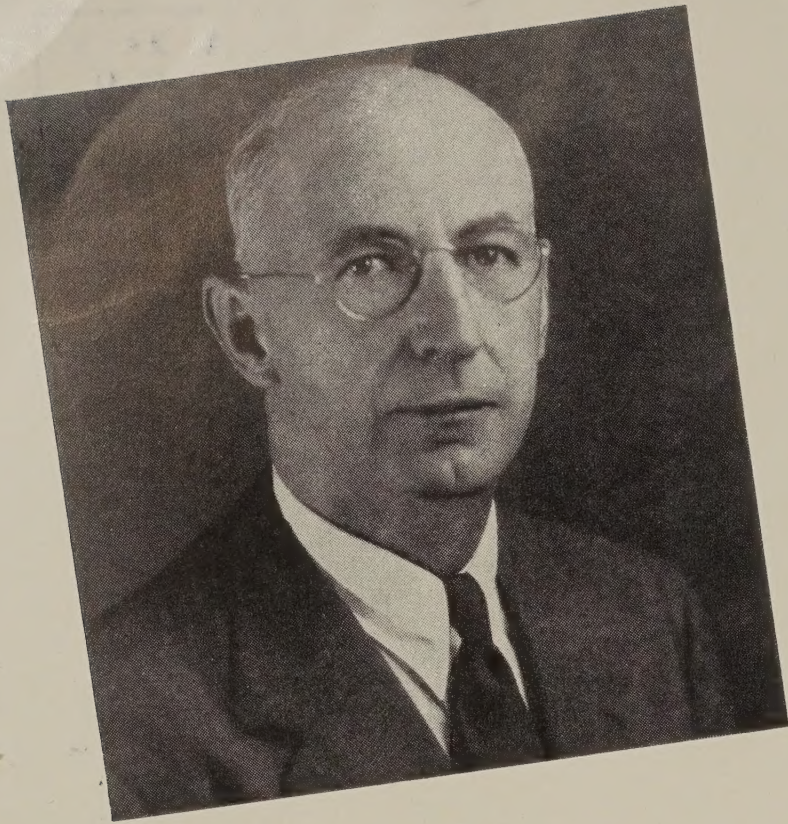
FORTY-NINER (Pat. No. 702)
Cat. No. 102
Each \$1.75; 3 for \$4.50



CRIMSON GLORY
(Pat. No. 105)
Cat. No. 100
Each \$1.35; 3 for \$3.75

Spring
1951

"Yours for Growing Satisfaction"



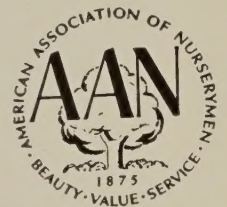
at *Neasha Nurseries*

Our entire organization is equipped to bring you the very best garden material, help with planting problems, and give courteous service at reasonable prices.

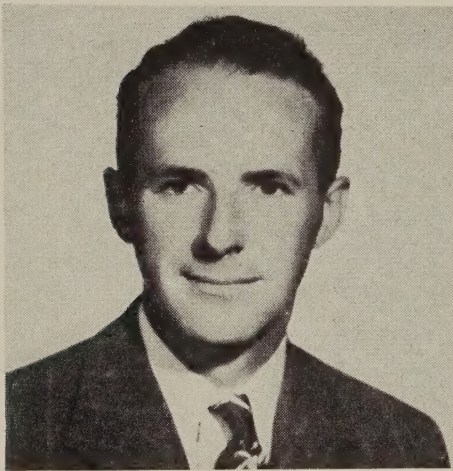
"Yours for Growing Satisfaction"

President and General Manager.

We are Members of:
American Association of
Nurserymen
National Mail Order Nurserymen's
Association
Missouri Assn. of Nurserymen



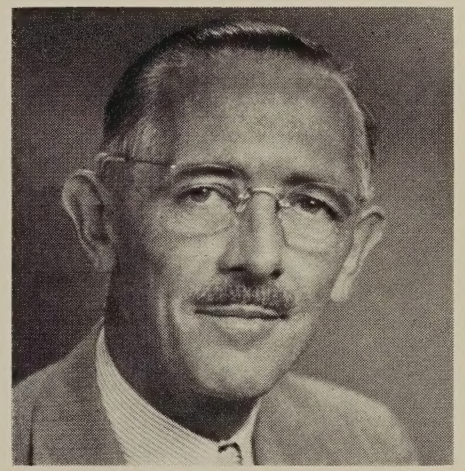
EVERY DEPARTMENT HEAD IS DIRECTLY INTERESTED IN SATISFYING OUR CUSTOMERS



Joseph Weston, Vice-President



G. B. Williams, Sec.-Treas.



M. Vaughn Woodard,
Sales Manager

DIRECT FROM GROWER TO YOU

Over 400 acres nursery farm of fertile Hagerstown silt loam produces thousands of thrifty, well-rooted plants to make your home more fruitful and more beautiful. We test new plants thoroughly before offering them to our customers. All stock is thoroughly inspected by an authorized State Inspector to guarantee freedom from disease.

We are constantly striving to make our plants and service to you better each year. We guarantee highest quality and arrival in good condition.

Over 50% of our business comes from old customers.

NEOSHO GUARANTEE

1. **True to Name** stock is our unqualified guarantee. We will replace without charge, or refund purchase price, if any proves otherwise.

2. "Yours for Growing Satisfaction" is our slogan, hence we **guarantee highest quality** and arrival in good condition. Examine shipment carefully on arrival. Any complaints made within **ten days** will be cheerfully adjusted to your satisfaction. We will either refund purchase price or replace stock, as you prefer.

3. Despite every precaution in shipping, handling and planting, there are occasional losses, even with the best of stock, over which none of us have any control. Hence, we offer to help you by sharing your loss. We will replace at one-half price any stock that fails to grow, if you will report by July 1st following planting. Accompany your report with remittance figured at one-half price.

"Yours for Growing Satisfaction."

HOW TO ORDER

All orders are F.O.B. Neosho, unless otherwise specified. 10% deposit with order, balance when you are ready for shipment or we will ship C.O.D. if you prefer. On orders for less than \$10.00 full cash must accompany order.

Order by catalog number, but write in variety also. Be sure and add **free** premiums desired, as listed on page 31— for ordering early. Missouri customers must add 2% Sales Tax.

Parcel Post Orders
Add 15% to cover postage
on orders up to \$4.00,
10% on orders over that
PLEASE ORDER EARLY

NOTE: These prices established June 1, 1950, effective at once, and to be maintained until May 1, 1951. All quantity rates of 25 and up subject to change without notice.

Enjoy bushels of blooms from spring till frost by planting easy to grow Neosho Perennials. **Price on all perennials unless otherwise noted: Each 35c; 3 for 90c; 6 for \$1.65; 12 for \$3.00.**

500—**ALYSSUM** (Basket of Gold). Covered in May with a mass of golden flowers about one foot in height. Excellent for rockery or border.

501—**BABY'S BREATH**, "Rosy Veil." Great masses of small light pink flowers from August till frost.

502—**BABY'S BREATH** (Gypsophila). Lovely feathery panicles of small starry white flowers borne in profusion on the threadlike stalks. Fine for cutting.

503—**BABY'S BREATH**, "Bristol Fairy." Large panicles of large, double white flowers. Blooms all summer. **Each 95c; 3 for \$2.50.**

504—**BLEEDING HEART, OLD-FASHIONED** (Dicentra spectabilis). 2 feet. It thrives in partially shaded places. Graceful heart-shaped flowers in April and May. Extra heavy plant. **Each 95c; 3 for \$2.50.**

505—**BLEEDING HEART, PLUMY** (Dicentra eximia). A dwarf growing new variety with finely cut foliage and pretty pink flowers throughout the season. **Each 50c; 3 for \$1.35.**

506—**BALLOON FLOWER** (Platycodon). Large purplish blue bell-shaped flowers, 2 to 3 inches across. Blooms from July through September. Hardy and easy to grow.

507—**CANDYTUFT**. Very desirable, dwarf plant covered with white flowers in April-May. Foliage is evergreen. Ultimate height 8 inches.

CARNATIONS, HARDY. The State flower of Indiana Hardy as an Oak, neat habit of growth, blooms all summer. Spicy fragrance. We think it is one of the finest garden plants.

508—**PINK HARDY CARNATION**

509—**RED HARDY CARNATION**

510—**YELLOW HARDY CARNATION**

511—**MIXED**

512—**COLUMBINE** (Aquilegia). A fine perennial for shaded locations. Large flowers, long slender out-curving spurs. Shades of blue, yellow, and pink.

516—**COREOPSIS** (Golden Daisy). Bright yellow daisy-like flowers in profusion all summer long—easy to grow; fine for cutting. Grows 3 feet tall.

517—**CORNFLOWER** (Stokesia). A perennial of easiest culture with large lavender-blue Aster-like flowers in late summer.

CHRYSANTHEMUMS—LARGE FLOWERING

See page 5 for color illustration.

518—**CHARLES NEY**. Double yellow.

520—**FLASHLIGHT**. Red.

519—**POLAR ICE**. White.

521—**SEPTEMBER DAWN**. Double pink.

Each 50c 3 for \$1.25 6 for \$2.25 12 for \$3.95

CUSHION MUMS. See page 4 for illustration.

Each 50c 3 for \$1.35 5 for \$2.00 10 for \$3.50 25 for \$7.50

527—**DELPHINIUM "Belladonna"**. Stately spikes of pale blue. Grows 3 to 5 feet tall.

534—**DELPHINIUM "Bellamosa"**. Medium blue.

529—**DELPHINIUM "Lamartine"**. Dark purplish blue.

528—**SHASTA DAISY**. Large glistening white flowers on long stems.

530—**PAINTED DAISY** (Pyrethrum). Showy Daisy-like flowers of red, pinks, and whites, with fine fernlike foliage. Excellent for cutting.



Cat. No. 506. Balloon Flower
Each 35c; 3 for 90c



Cat. No. 539. Helianthemum
Each 35c; 3 for 90c



Cat. No. 545. Clove Pinks
Each 35c; 3 for 90c

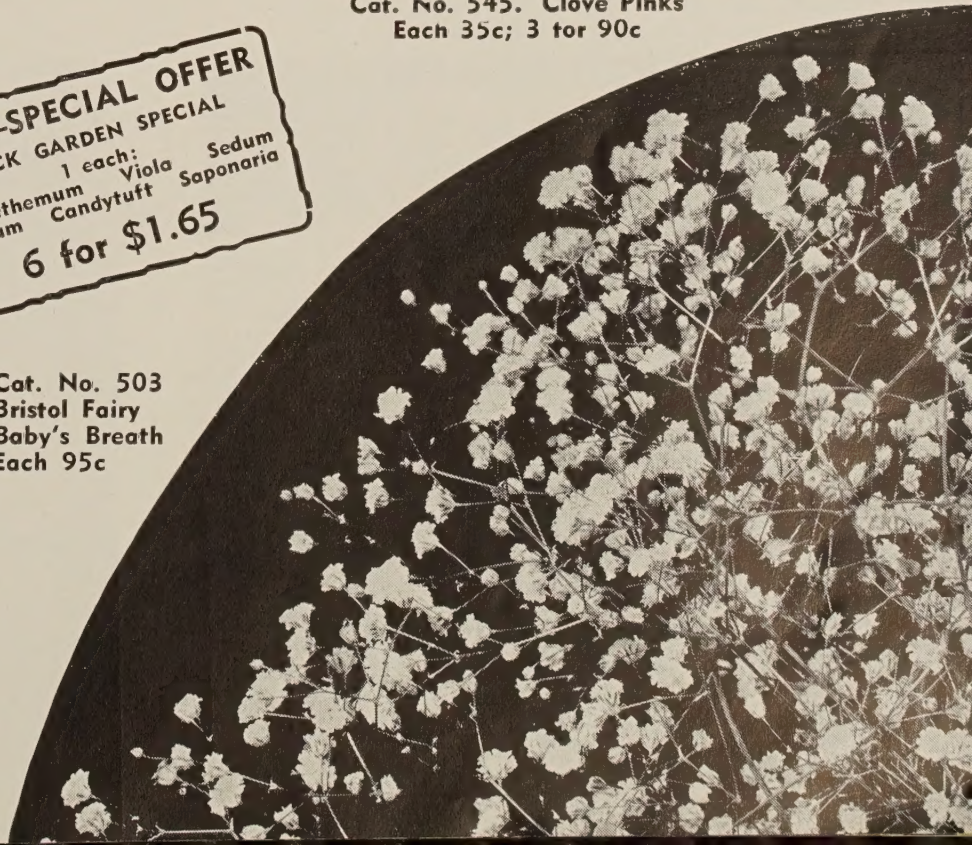
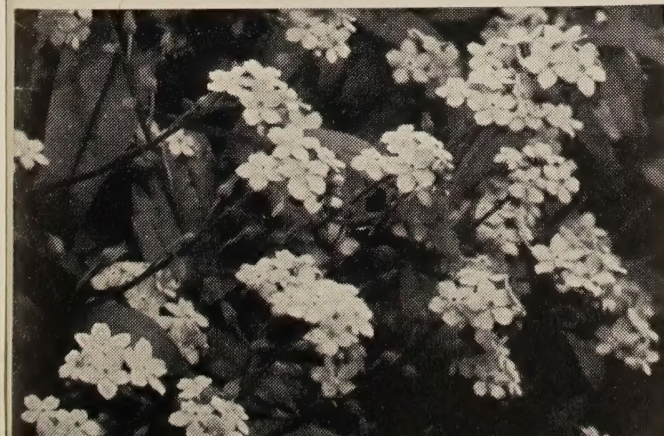
**PLEASE ORDER
BY CATALOG NUMBER**

FREE PREMIUMS with
EARLY ORDERS
See page 31

Cat. No. 531. Forget-Me-Not
Each 35c; 3 for 90c

607—SPECIAL OFFER
ROCK GARDEN SPECIAL
1 each: Viola Sedum
Helianthemum Candytuft Saponaria
Alyssum
6 for \$1.65

Cat. No. 503
Bristol Fairy
Baby's Breath
Each 95c



Neasha HARDY PERENNIALS

Bring Years of Colorful Carefree Beauty
Blooms the First Year From May Till Frost



Hibiscus
Cat. No. 536, Pink 537, Red
Each 35c; 3 for 90c

Gaillardia, Burgundy
Cat. No. 533
35c each; 3 for 90c

**PLEASE
ORDER
By Catalog
Number**

PHLOX
See page 6 for complete list of varieties and description. See back cover for color illustration.
Each 40c 3 for \$1.00



Cat. No. 533. Gaillardia

Cat. No. 536. Hibiscus



Cat. No. 504
Bleeding Heart,
Old Fashion
Each 95c;
3 for \$2.50

No. 835 Sunshine Special
1 Carnation. Red. 1 Phlox. Pink.
1 Columbine. Blue. 1 Shasta Daisy. White.
1 Sweet William. Red. 1 Cushion Mum. Bronze
All 6 for \$1.50

Beautiful Hardy Cushion Mums

Bushels of Bloom to a Single Plant the First Year
Bloom from August Until Frost

Cat. No. 522. Pink.	Cat. No. 524. Yellow.	Cat. No. 525. Bronze.
Cat. No. 523. Red.		Cat. No. 526. White.
Each 50c	3 for \$1.35	5 for \$2.00
10 for \$3.50	25 for \$7.50	

Cat. No. 504. Bleeding Heart, Old Fashion
Cat. No. 524. Yellow Cushion Mum

[4]

Cat. No. 522. Pink Cushion Mum





Hardy Carnations

Each 35c 3 for 90c
 508. Pink 511. Mixed
 509. Red 510. Yellow



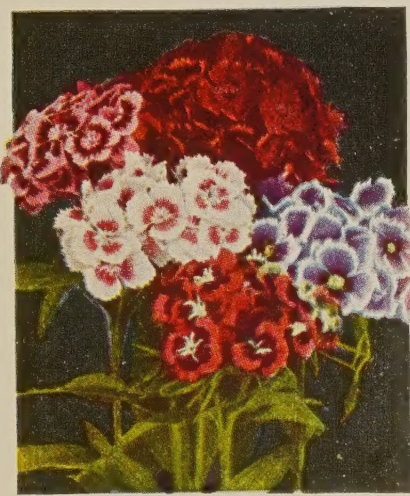
Cat. No. 512. Columbine
 Mixed Colors
 Each 35c 3 for 90c



Delphinium

Cat. No. 527. Belladonna. Light blue.
 Cat. No. 529. Lamartine. Dark blue.
 Cat. No. 534. Bellamosa. Medium blue.
 Each 35c 3 for 90c

*Please Order
 By Catalog Number*



Sweet William

← Sweet William
 Each 35c; 3 for 90c
 Cat. No. 562. Red.
 Cat. No. 563. Pink.
 Cat. No. 564. White.
 Cat. No. 565. Purple.

CHRYSANTHEMUMS

Large Flowering

518. Charles Nye	519. Polar Ice
520. Flashlight	521. September Dawn
Each 50c 3 for \$1.25	6 for \$2.25 12 for \$3.95

[51]

Cat. No. 525. Bronze Cushion Mum



Neosha HARDY PERENNIALS

See Back Cover for Phlox Illustration in Color

Price on Perennials unless otherwise noted:
Each 35c; 3 for 90c; 6 for \$1.65; 12 for \$3.00.



Cat. No. 530. Painted Daisy
Each 35c; 3 for 90c

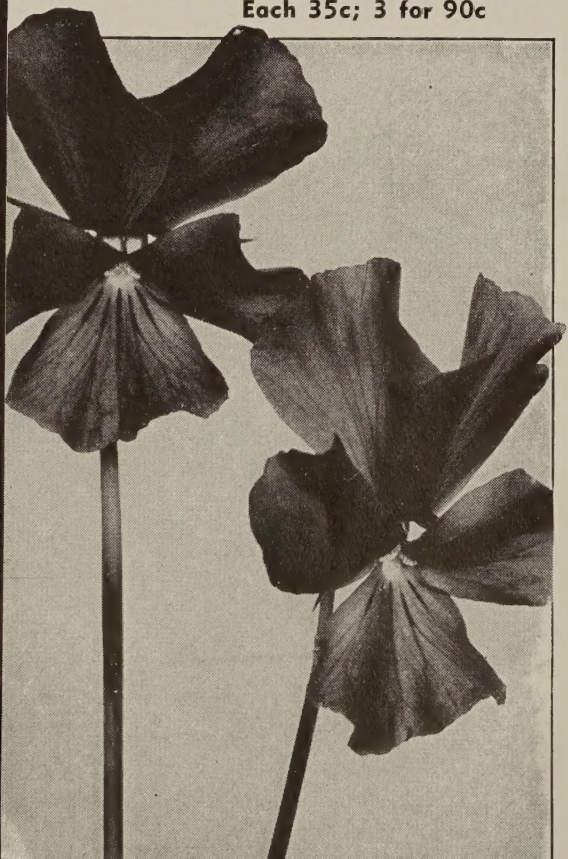


Cat. No. 528. Shasta Daisy—Each 35c



Cat. No. 566. Sedum Spectabile
Each 35c; 3 for 90c

Cat. No. 569—Viola, Jersey Gem
Each 35c; 3 for 90c



531—FORGET-ME-NOTS. Low, everblooming perennial; fine for shady locations.

532—FUNKIA CAERULEA. Deep blue flowers in July on 3-foot stalks.

533—GAILLARDIA, BURGUNDY (Blanket Flower). Giant sized blooms of rich burgundy-red petals with gold tips. Excellent for cutting. Grows 3 feet tall.

535—GEUM, MRS. BRADSHAW. Rich orange flowers from June to September.

MALLOW MARVELS (Hibiscus). Shrublike perennial 4 feet tall. Blooms August and September.

536—Pink 537—Red

539—HELIANTHEMUM (Rock Rose). Low, spreading plants form a mat of foliage and bloom from July to September with small, single flowers in shades of pink, red, and white. Very hardy.

HOLLYHOCKS (Double). A magnificent new strain with exquisite double flowers; hardy and easy to grow.

540—Red. 541—Yellow. 542—Pink. 543—White. 544—Mixed.

545—PINKS, CLOVE (Dianthus plumarius). Fine plants for the sunny border, easy to grow. Blue-green, grasslike foliage and hundreds of blossoms in reds, pinks and whites with spicy fragrance.

546—PRIMROSE (Missouri). Low growing plants with large yellow fragrant flowers, 3 to 5 inches across, borne on trailing stems. Leaves thick and narrow. Excellent for front of border or rock garden.

547—PHLOX SUBULATA. (Moss Pinks.) An early spring flowering perennial with pretty mosslike evergreen foliage and masses of pink or red flowers. Low, compact, spreading growth.

HARDY PHLOX

PRICES on Phlox as Follows:

Each 40c 3 for \$1.00 6 for \$1.85 12 for \$3.50

See Back Cover for Illustrations in Color.

549—DAILY SKETCH. A magnificent Phlox. Lustrous, sparkling pink with deeper eye. Very large flowers on tall, strong stems.

550—FRAU ALFRED VON MATNER. The best salmon-orange Phlox grown. Very free flowering.

551—IRENE. One of the best cherry-red Phlox. Medium height with bronzy green foliage.

552—MARY LOUISE. Without doubt the best white Phlox, with immense heads of purest white. Free bloomer.

553—ROYAL PURPLE. Rich shaded violet with deeper eye.

554—SALMON GLOW. Immense heads of rich salmon. Very free blooming.

555—SWEETHEART. Deep salmon-pink. A beauty.

556—CAROLINE VANDENBERG. Showy lavender-blue flowers.

557—SAN ANTONIO. Rich ruby-red. Very large.

560—STATICE LATIFOLIA. Fine panicles covered with small blue flowers from Aug. to Sept.

561—SPIREA ASTILBE (Filipendula). Feathery white flowers on 12-inch stems. Lovely fernlike foliage.

Each 95c 3 for \$2.50

SWEET WILLIAM (Dianthus barbatus). Dense rounded terminal heads of 20 to 30 flowers.

562—Red. 563—Pink. 564—White. 565—Purple.

566—SEDUM SPECTABILE. About 18 in. tall with broad, light green foliage and large heads of brilliant pink flowers in late summer.

567—TRITOMA (Red Hot Poker). These new hybrids are hardy, with beautiful flower spikes of brilliant orange-red. 3 to 4 feet tall.

568—TUNICA SAXIFRAGA. Double, rose-pink flowers all spring and summer.

569—VIOLA, JERSEY GEM. Does well in sun or shade. Bloom all summer with large violet Pansy blooms. Grow 6 to 8 in. tall.

570—LIRIOPE, MUSCARI (Big Blue Liriope). A low grasslike perennial. Leave up to 12 inches high with large spikes of blue flowers. Does well in sun or shade and is excellent for edging and porch plants.

571—SAPONARIA. Low spreading plant with bright pink flowers in May. Fine for rock garden, borders, walls.

Cat. No. 516—Coreopsis
Each 35c; 3 for 90c

[6]



Please Order
By Catalog Number

Cat. No. 571. Saponaria—35c each; 3 for 90c



Neasha HARDY HEDGES

Beautiful Living Fences

A beautiful green wall that beautifies as it serves to make a barrier or a screen at very small initial cost and no maintenance except to prune to desired shape and height.

To make a good compact hedge, they should be planted 8 to 9 inches apart and pruned back to within 2 inches of the ground when they are set. They should be sheared several times in the early part of the growing season to form a dense, compact hedge.

Why is the 2-3 ft. grade more desirable and of better value than 12-18 inch if you are going to cut them back when planting? Because the 12-18 inch will have 2 to 3 canes. The 2-3 ft. will have 5 to 9 canes and a much heavier root system, hence will make a compact hedge the first season.

The hedge plants we offer are heavy, well-branched, field-grown plants which give an immediate effect, and should not be confused with small, spindling, 2-year seedlings from beds.



PLEASE ORDER BY CATALOG NUMBER

PRIVET HEDGES

302—CALIFORNIA PRIVET. Semi-evergreen, with thick, dark green foliage. Most beautiful of all the Privets, but north of latitude of Kansas City it is only semi-hardy. A rapid grower, can be sheared to any desired height, making a dense, compact green wall. Plant 9-12 in. apart.

	Per 10	Per 25	Per 50	Per 100		Per 10	Per 25	Per 50	Per 100
12-18 in.	\$1.25	\$2.50	\$4.25	\$7.95	2-3 ft.	\$2.00	\$4.00	\$7.00	\$12.95
18-24 in.	1.50	3.00	5.50	9.95					

303—HARDY AMUR PRIVET (Amur River North). America's leading trimmed hedge plant; hardiest of all, standing 20 degrees below zero. Can be trimmed to any desired height and always makes a dense, attractive hedge. Plant 9-12 in. apart.

	Per 10	Per 25	Per 50	Per 100		Per 10	Per 25	Per 50	Per 100
12-18 in.	\$1.60	\$3.20	\$5.85	\$9.95	2-3 ft.	\$2.50	\$5.75	\$10.75	\$17.95
18-24 in.	1.95	4.25	7.95	13.95					

304—EVERGREEN PRIVET (Amur River South). Hardy as far north as Kansas City, Missouri. This Privet has dark green glossy foliage which here at Neosho will hold its foliage all winter long. Plant 9-12 in. apart.

	Per 10	Per 25	Per 50	Per 100		Per 10	Per 25	Per 50	Per 100
12-18 in.	\$1.60	\$3.20	\$5.85	\$10.65	2-3 ft.	\$2.50	\$5.75	\$10.75	\$19.95
18-24 in.	1.95	4.50	7.95	14.95					

308—IBOLIUM PRIVET. A cross between California and Iboeta Privet, with dark glossy foliage of the California and the hardness of the Iboeta. Well branched. Plant 9 to 12 inches apart.

	Per 10	Per 25	Per 50	Per 100		Per 10	Per 25	Per 50	Per 100
12-18 in.	\$1.60	\$3.20	\$5.85	\$9.95	2-3 ft.	\$2.50	\$5.75	\$10.75	\$17.95
18-24 in.	1.95	4.25	7.95	13.95					

309—POLISH PRIVET. An extremely hardy variety with dark green foliage. Plant 9-12 in. apart.

	Per 10	Per 25	Per 50	Per 100		Per 10	Per 25	Per 50	Per 100
12-18 in.	\$1.60	\$3.20	\$5.85	\$9.95	2-3 ft.	\$2.50	\$5.75	\$10.75	\$17.95
18-24 in.	1.95	4.25	7.95	13.95					

310—REGELS PRIVET (Fern Leaf). Low growing, dense shrub. Thrives in shade and depleted soil.

	Per 10	Per 25	Per 50		Per 10	Per 25	Per 50
15-18 in.	\$4.00	\$ 8.75	\$15.95	2 1/2-3 ft.	\$6.50	\$14.95	\$27.50
18-24 in.	5.00	11.25	20.95				

SHRUB HEDGES

300—GREEN BARBERRY. A protective as well as ornamental hedge, as the small spines will keep out cats, dogs, and chickens. Makes an attractive hedge either trimmed or untrimmed. Perfectly hardy. Red berries, and foliage colors beautifully in fall. Plant 18-24 in. apart.

	Per 10	Per 25	Per 50		Per 10	Per 25	Per 50
12-18 in.	\$3.50	\$ 7.50	\$13.95	18-24 in.	\$5.00	\$11.25	\$21.00

301—RED-LEAF BARBERRY. Same habit of growth as above but with bright red foliage all summer.

	Per 10	Per 25	Per 50		Per 10	Per 25	Per 50
12-18 in.	\$5.00	\$11.25	\$21.00	18-24 in.	\$7.50	\$16.25	\$30.00

305—EUONYMUS PATENS. Evergreen. Ideal evergreen hedge, should be kept trimmed for best effect. Plant 12-15 inches apart in row.

	Per 10	Per 25		Per 10	Per 25
9-12 in.	\$5.95	\$13.75	12-18 in.	\$6.95	\$15.95

311—HONEYSUCKLE, TATARIAN. One of the most satisfactory tall growing hedge plants. It is strong, vigorous, and hardy and one of the first shrubs to leaf out in the spring and retains its foliage well into the winter. The small, pink blossoms are followed by bright red fruits. Normally grows into a hedge 6 to 12 feet and will thrive in most any soil. Plant 3 feet apart.

	Per 10	Per 25		Per 10	Per 25
18-24 in.	\$4.50	\$10.95	3-4 ft.	\$7.00	\$15.00
2-3 ft.	5.50	13.75			

306—SPIREA, THUNBERGI. Makes an attractive hedge 4 to 6 feet tall. Its slender arching branches are completely covered with small white blossoms in early spring, and its narrow light green foliage changes to shades of orange in the fall. Plant 2 feet apart.

	Per 10	Per 25		Per 10	Per 25
18-24 in.	\$4.00	\$ 9.25	2-3 ft.	\$5.50	\$12.50

307—SPIREA, VAN HOUTTEI (Bridal Wreath). Makes a beautiful untrimmed hedge and is the most widely planted shrub in the United States.

	Per 10	Per 25	Per 50		Per 10	Per 25	Per 50
12-18 in.	\$2.95	\$6.95	\$12.95	2-3 ft.	\$4.50	\$ 9.95	\$18.75
18-24 in.	3.75	8.75	16.50	3-4 ft.	5.50	12.50	23.50

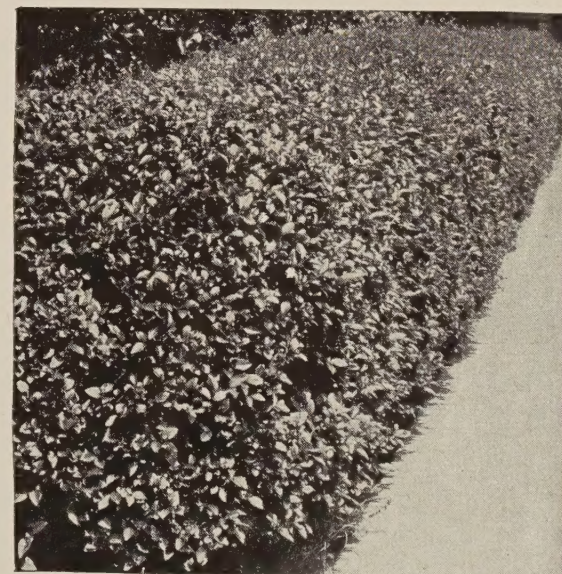
312—ROSA MULTIFLORA HEDGE. See page 30.



Japanese Multiflora Rose Hedge

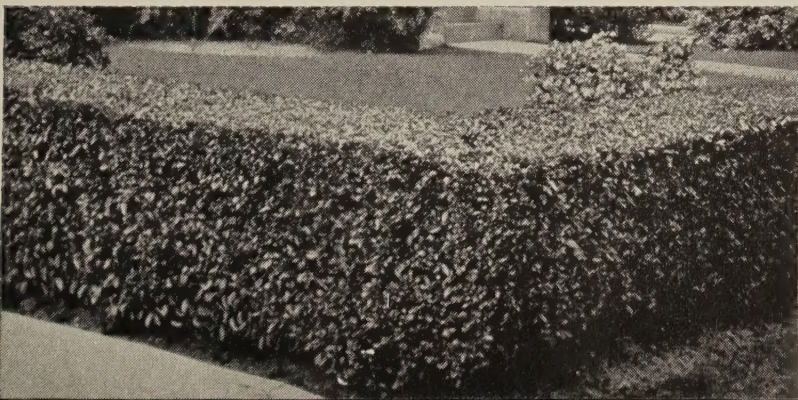


Cat. No. 307. Spirea Van Houttei



Cat. No. 303. Amur River North Privet

Cat. No. 304. Amur River South Privet



Cat. No. 300 Jap. Barberry



Please Order by
Catalog Number

→
**Cat. No. 15
BLUE MIST**

From August till frost is covered with powdery blue fringed flowers. Grows 2-3 ft. tall and about as broad. Silvery green foliage. **Super X \$1.00; select 80c.**



Cat. No. 15. Blue Mist—Super X \$1.00

**Cat. No. 38. WEIGELA,
BRISTOL RUBY.** (Pat. No.

492.) The hardiest and best Weigela grown. Makes a shapely thrifty plant 6-8 ft. tall with attractive rich green foliage. Plant is completely hidden in late May or early June with beautiful ruby-red, trumpet-shaped flowers. A real sight to behold. Has tendency to bloom again in fall. **Super X \$1.50; select \$1.25.**

CRAPEMYRTLE

One of the best flowering shrubs for areas as far north as southern Missouri. Beautiful watermelon-red blossoms from July until frost.

No. 20—RED. Super X 95c; select 70c.

No. 21—PINK. Super X 95c; select 70c.

22—WILLIAM TOOVEY.

A new hardier and dwarf growing strain. Beautiful pink blossoms all summer. Blooms on new wood each year so prune back severely each spring. **Super X \$1.25.**



←
**BUTTERFLY BUSH
or SUMMER LILAC
(Buddleia)**

Bloom all summer. Immense, fragrant flowers. Easy to grow.

16—CHARMING. Rosy orchid-pink flowers. Spikes 15-18 inches long. Bright green foliage.

17—FLAMING VIOLET. Immense spikes of flaming violet. Flower trusses 12-18 in. long. Plant is vigorous, upright grower.

18—ISLE DE FRANCE. Rich purple flowers with orange eye and rich green foliage.

19—FARQUHAR. Lilac-purple variety. Blooms all summer.

Super X 75c; select 60c.

→
**27—HARDY BLUE or
PINK HYDRAN-
GEA.**

Immense flower heads which are pink in alkaline soil and blue in acid soil. Keep well watered and mulch in winter. **Super X \$1.65.**



Cat. No. 27. Pink Hydrangea

↓ **Cat. No. 24. FORSYTHIA.** Bright yellow bell-shaped flowers in early spring. Grows anywhere. **Super X 95c; select 80c; post size 60c.**

[8]





14—**RED-LEAF BARBERRY.** Lustrous bronze-red foliage all summer. A dense compact shrub about 4 ft. tall. Plant in sun for best color. **Super X 95c; select 75c; post size 60c.**



76—**AZALEA MOLLIS.** This variety is perfectly hardy in midwest. Is tolerant of lime, will stand 10° below zero. Grows 3-4 ft. Colors range through orange-yellow and salmon. Use on east or north side. Mulch with peat moss, 4 to 6 inches deep. **Each \$2.50.**

SHRUBS



Cat. No. 27. **Blue Hydrangea**



Cat. No. 63. **Chinese Lilac**

Cat. No. 40—**SPIREA, DWARF CRIMSON.** (Anthony Waterer.) Neat dense shrub 2-3 ft. tall with rose-red flowers all summer. Fine for foundation planting. **Super X 80c; select 60c; post size 50c.**

63—**LILAC, CHINESE.** Blooms second year with graceful slender branches covered with lovely rosy lilac flowers in great profusion. Has neat habit of growth and does not sucker (sprout from roots) like common Lilac. **Super X 95c; select 80c; post size 60c.**

61—**SUNGOLD HYPERICUM.** (Plant Pat. No. 568.) A brilliant mound of gold all summer. Dazzling golden flowers on a low growing shrub, with glossy green foliage. Grows 3 to 4 ft. tall. **Super X \$1.65.**

Cat. No. 40. **Spirea Anthony Waterer**



PLEASE
ORDER
BY
CATALOG
NUMBER



Cat. No. 8. Snowberry (Chenaulti)
Super X 80c



Cat. No. 42. Spirea Thunbergii
Super X 80c



Cat. No. 29. Hydrangea P. G.
Super X \$1.15

Cat. No. 34. Virginal Mock Orange
Super X \$1.00



We offer shrubs in 3 sizes, all hardy, field-grown, first-class plants.

Super X Grade are for those who desire quick results and extra heavy plants. These are the largest, finest specimen plants obtainable.

Select Grade are heavy, select plants out of our 2- and 3-year-old blocks; well rooted and heavily branched.

Post Size: This grade is the size most Mail Order firms offer as 2-year, field-grown.

45—ALMOND, FLOWERING. Beautiful small double, rose-pink flowers in early spring. Grows 3 to 4 feet tall.

Super X \$1.00 Select 80c

ALTHEA. Picture and description on back cover.

12—Pink 13—Red 46—Purple 47—White
Super X 80c Select 65c Post Size 50c

76—AZALEA MOLLIS. Picture and description on page 9.

Each \$2.50

1—BARBERRY, GREEN. Makes a low, dense, rounded shrub about 3 feet tall, and wide. Will grow in sun or shade and in the fall its foliage colors a beautiful bronzy red. Bright red berries hang on all winter.

Super X 80c Select 65c Post Size 50c

14—BARBERRY, RED. Most brilliant colored shrub of all with lustrous red foliage all season and bright red berries in the fall. Plant in full sun.

Super X 95c Select 75c Post Size 60c

2—BEAUTYBERRY (Callicarpa). Branches covered in August with thousands of closely set small pink flowers. These are followed in September by masses of glittering violet-blue berries in dense clusters along each branch. Grows 4 to 6 feet tall.

Super X 80c Select 65c Post Size 50c

49—BEAUTY BUSH (Kolkwitzia). Delicate pink flowers in May. Grows 6 to 8 feet tall.

Super X \$1.00 Select 80c Post Size 60c

15—BLUE MIST. Picture and description on page 8.

Super X \$1.00 Select 80c

BUTTERFLY BUSH. Picture and description on page 8.

16—Charming. 18—Ile de France.

17—Flaming Violet. 19—Farquhar.
Super X 75c Select 60c

50—BUSH CHERRY. Fruitful as well as ornamental, with white blossoms followed by rich red fruit which is fine for jams, jellies or pies. Grows 5 to 6 feet tall.

Super X \$1.00 Select 80c

3—CALYCANTHUS (Sweet Shrub). A handsome shrub with glossy foliage and chocolate-brown flowers which have a spicy fragrance. Will grow in shade. Grows 5 to 6 feet tall.

Super X \$1.00 Select 80c Post Size 60c

CRAPERYTLE. Description and picture on page 8.

22—William Toovey. Super X \$1.25 each.

20—Red. 21—Pink.
Super X 95c Select 70c

51—CRANBERRY, HIGH BUSH. Single white flowers in April and May are followed by clusters of scarlet berries in late summer, hanging on until spring. Will grow in shade as well as sun. 8 to 10 feet.

Super X \$1.00 Select 80c

23—DESMODIUM. A medium growing shrub with long, graceful branches covered with large clusters of royal purple, Sweet-Pea-like flowers in early fall—very showy. Grows 5 to 6 feet tall.

Super X 95c Select 75c

52—DEUTZIA, PRIDE OF ROCHESTER. Double white flowers, tinged with pink, in great profusion in April and May. Grows 8 to 10 feet tall.

Super X 80c Select 60c Post Size 50c

53—DEUTZIA GRACILIS. Low, graceful shrub, 2 feet, with profusion of white flowers in May. Will grow in shade.

Super X 95c Select 75c

4—DOGWOOD, RED-TWIGGED. Bright red twigs which contrast remarkably with the bare, dull colored branches of other shrubs in winter. Grows 6 to 8 feet tall.

Super X 80c Select 65c Post Size 50c

69—EUONYMUS PATENS. A fine shrub for foundation planting, holding its foliage well into winter. Large, dark green, glossy foliage with berries similar to Bittersweet. Will stand shade. See picture and description on page 15.

Super X \$1.35 Select \$1.00 Post Size 80c

Hardy FLOWERING SHRUBS

24—FORSYTHIA. Picture and description on page 8.

Super X 95c Select 80c Post Size 60c

54—FLOWERING QUINCE (Fire Bush). Brilliant scarlet blossoms in early spring followed by fragrant yellow Quinces which combined with Apples or Peaches make delicious jelly. Our plants are propagated from selected cuttings to insure blossoms of true scarlet color.

Super X 95c Select 80c Post Size 60c

55—GLOBE FLOWER (Kerria Japonica). Brilliant double golden yellow flowers in May and June. Bright green stems and foliage add to the brilliancy of the flowers.

Super X \$1.25 Select \$1.00 Post Size 80c

GROOTENDORST, RUGOSA. Everblooming hardy shrub Rose. 4 to 6 feet tall. Blooms all summer with clusters of double flowers. Fine for borders or foundations.

56—Red 57—Pink Super X \$1.00

59—HONEYSUCKLE, FRAGRANT. Fragrant creamy white flowers nestled in deep green leaves adorn this nearly evergreen shrub. The glossy dark green leaves remain until almost spring. Grows 8 feet tall.

Super X 95c Select 80c

60—HONEYSUCKLE, HECKROTTI. See back cover for description and price.

Super X 80c Select 65c

25—HONEYSUCKLE, TATARIAN. A rapid grower with handsome foliage and rosy pink flowers, followed by bright red berries. Fine for border. 8 to 10 feet.

Super X 80c Select 65c Post Size 50c



Cat. No. 3. Calycanthus
Super X, each \$1.00

26—HONEYSUCKLE, RED ZABELLI. Rosy red flowers, followed by bright red berries. One of the hardiest shrubs with good, compact bush habit of growth.

Super X \$1.00 Select 80c Post Size 60c

27—HYDRANGEA, BLUE or PINK. Description and picture on page 9.

Super X \$1.65

28—HYDRANGEA, A. G. The Snowball Hydrangea, with large, round, pure white flowers which bloom in early summer.

Super X \$1.15 Select \$1.00 Post Size 75c

29—HYDRANGEA, P. G. Immense cone-shaped white flowers blooming in late summer and fall, which change to pinkish bronze later.

Super X \$1.15 Select \$1.00 Post Size 75c

61—HYPERICUM, SUNGOLD. See illustration and description on page 9.

Super X \$1.65

58—HUGONIS ROSE. Bright yellow single Rose in spring; attractive foliage. Perfectly hardy. Grows 5 to 6 feet tall.

Super X \$1.00 Select 75c

*Permanent
and
Easily Cared For*

LILAC, FRENCH. See illustration and description on page 14.

Super X \$1.75 Select \$1.25

62—LILAC, COMMON. Grows anywhere and its masses of light purple blooming in early spring are a constant delight.

Super X 95c Select 80c
Post Size 60c

63—LILAC, CHINESE or PERSIAN. Blooms second year with graceful slender branches covered with rosy lilac flowers in great profusion. Has neat habit of growth and does not sucker (sprout from roots) like common Lilac.

Super X 95c Select 80c
Post Size 60c

64—MOCK ORANGE. Single white flowers of sweet-scented fragrance. A vigorous, upright hardy shrub that grows 8 to 10 feet tall.

Super X 80c Select 60c
Post Size 50c

34—MOCK ORANGE, VIRGINAL (Double Mock Orange). Large, double white flowers in profusion, exquisitely fragrant. Grows 6 to 8 feet tall.

Super X \$1.00 Select 80c
Post Size 60c

35—MOCK ORANGE, WHITE BOUQUET. The most profuse bloomer. The twiggy branching plant is completely covered with pure white flowers in spring. Fragrant. Grows 6 to 8 feet tall.

Super X 95c Select 80c
Post Size 60c



Cat. No. 54. Flowering Quince
Super X, each 95c

7—REGEL'S PRIVET. (Fernleaf.) Low-growing, dense shrub with horizontal branches; thrives in the shade and on depleted soil locations. Grows 6 to 8 feet tall.

Super X 80c Select 60c
Post Size 50c

36—SNOWBALL. An old-fashioned, tall growing shrub still popular. In the spring it is completely covered with pure white, snowball-like blossoms. Perfectly hardy.

Super X \$1.15 Select \$1.00

67—JAP. SNOWBALL. Pure white flowers in a perfect round ball, 3-4 inches across. Attractive foliage. Much neater and superior to regular Snowball.

Super X \$1.15

8—SNOWBERRY (Chenaulti). One of the hardiest low growing shrubs with attractive foliage all summer and masses of rose-colored berries in the fall. Grows 4 to 6 feet tall.

Super X 80c Select 60c
Post Size 50c

9—TAMARISK. A tall growing shrub with feathery green foliage and bright pink flowers in May. Can be kept pruned to any desired height. Grows 8 to 10 feet tall.

Super X 80c Select 60c
Post Size 50c

65—VITEX (Chaste Tree). Grows 8 to 10 feet tall with big palmate foliage and branching spikes of beautiful lavender-blue flowers in August and September. Will stand hot locations.

Super X \$1.00 Select 80c
Post Size 60c

37—WEIGELA, ROSEA. Beautiful rose-pink trumpet-shaped flowers on a broad shrub, 6 to 8 feet tall.

Super X 95c Select 80c

39—WEIGELA, VANICEKE. A new red variety, extremely hardy and heavy bloomer.

Super X \$1.25 Select \$1.10

38—WEIGELA, BRISTOL RUBY. See description and illustration on page 8.

Super X \$1.50 Select \$1.25

74—VIBURNUM CARLESI. In spring it is covered with blooms so fragrant they perfume the yard. Flowers light pink outside and inside snowy white. Compact grower, 4 to 5 ft. tall. Will grow in shade.

Super X \$2.50

75—VIBURNUM, ENCHANTMENT. 5-6 ft. Neat compact habit of growth bearing 5-inch clusters of white flowers in May followed by clusters of rich scarlet berries. Foliage colors bronzy red in fall and remains on until late winter.

Super X \$1.50 Select \$1.25
Post Size \$1.00

40—SPIREA, ANTHONY WATERER. See picture and description, page 9.

Super X 80c Select 60c
Post Size 50c

66—PINK SPIREA (Froebeli). A low compact shrub to 4 feet, covered in May and June with clusters of bright pink flowers.

Super X 80c Select 60c
Post Size 50c

43—VAN HOUTTEI. This popular shrub needs no description. Most people know it as "Bridal Wreath."

Super X 65c Select 50c
Post Size 40c

10—SPIREA, KOREAN. Similar to Van Houttei, with larger flowers. Blooms about 2 weeks later.

Super X 80c Select 60c
Post Size 50c

42—SNOW GARLAND (Spirea Thunbergi). Graceful habit, white flowers in March and April. Grows 5 to 6 feet tall.

Super X 80c Select 60c
Post Size 50c

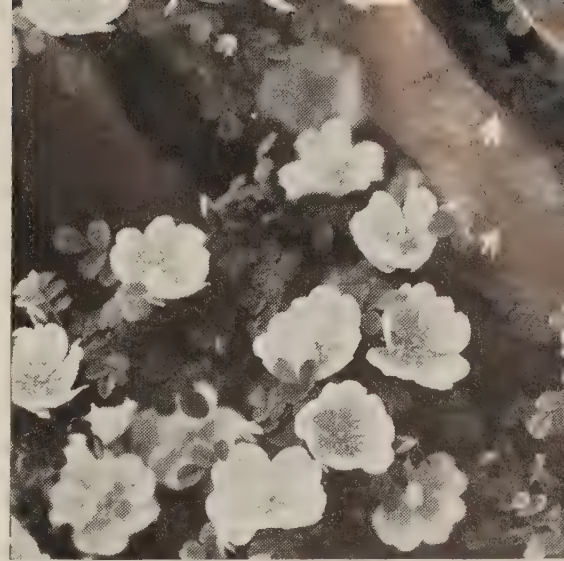
41—SPIREA, BUMALDA CRISPA. A new dwarf crimson Spirea with deep cut foliage and brilliant crimson flowers all summer. Grows 2 to 3 feet tall.

Super X \$1.25

MAGNOLIAS, SOULANGEANA, and SOULANGEANA NIGRA. See description and prices on page 12.

18-24 in. . . . \$3.25

SEE PAGE 31 FOR FREE PREMIUMS
WITH ORDERS



Cat. No. 58. Hugonis Rose
Super X, each \$1.00



Cat. No. 65. Vitex
Super X, each \$1.00



Cat. No. 64. Mock Orange, Coronarius
Super X 80c

Cat. No. 36. Snowball—Super X, each \$1.15



Flowering Trees



Magnolia Soulangeana
Cat. No. 72
18-24 in., \$3.25

MAGNOLIAS

72—SOULANGEANA. Immense tulip-like blossoms in early spring before leaves appear. Light pink with purple tinge on outside of petals. This variety is hardy.

Bare root, 18-24 in., \$3.25

73—SOULANGEANA NIGRA. Similar to Soulangeana except that blossoms are rich purple color and has tendency to bloom again in fall.

Bare root, 18-24 in., \$3.25

320—MIMOSA (Silk Tree). A low flat-headed tree with fern-like foliage and feathery pink blossoms all summer. Not hardy north of Kansas City, Missouri.

2-3 ft., \$1.25 3-4 ft., \$1.50

321—DOUBLE FLOWERING PLUM. Small treelike shrub with double pink flowers in spring.

2-3 ft., \$1.00 3-4 ft., \$1.50

322—RED-LEAF PLUM. A dwarf compact tree with rich blood-red foliage all summer.

2-3 ft.\$1.35 3-4 ft.\$1.75

323—DOUBLE FLOWERING PEACH. Brilliant, double bright red flowers in spring

2-3 ft.\$0.95 4-5 ft.\$1.75
3-4 ft. 1.35 5-6 ft. 2.25

Cat. No. 320. Mimosa (Silk Tree)



327—TREE WISTERIA. Beautiful purplish blue flowers completely cover the tree in May. Fine for lawn specimen. These are tree formed on trunks 4-5 ft. high. Lives for generations. 4-5 ft., each \$7.00.



Cat. No. 327. Tree Wisteria—Each \$7.00

325—CHINESE REDBUD. An improved dwarf variety, grows like a large shrub with larger and deeper colored blossoms.

18-24 in.\$1.50 3-4 ft.\$2.75
2-3 ft. 1.95

326—RUSSIAN OLIVE. Gray-green foliage with silver under side which gives good color contrast. Will thrive in hot dry locations.

3-4 ft.\$0.75 4-5 ft.\$1.25

Cat. No. 324. Redbud

315—CRAB, BECHTEL'S.

Double pink blossoms exactly like small Roses in spring.

2-3 ft.\$1.35
3-4 ft. 1.75
4-5 ft. 2.25

324—REDBUD. Clusters of purplish pink flowers cover branches in early spring before leaves appear.

3-4 ft.\$1.35
4-5 ft. 1.75
5-6 ft. 2.25
6-8 ft. 2.75
8-10 ft. 3.50

PLEASE
ORDER BY
CATALOG NUMBER



Pink Dogwood
Cat. No. 318. 2-3 ft., \$3.25

318—DOGWOOD, PINK. Large reddish pink flowers. Tree blooms quite young.

2-3 ft., \$3.25 3-4 ft., \$4.50

317—DOGWOOD, WHITE. Large white flowers in spring. Bright colored foliage in fall. A beautiful native flowering tree.

2-3 ft., \$1.75 4-5 ft., \$2.95
3-4 ft., 2.25 5-6 ft., 3.50

316—CRAB, HOPA. Flowers are deep pink, foliage is maroon and green. The best flowering Crab. Good grower and a beautiful ornamental tree.

3-4 ft., \$1.50 5-6 ft., \$2.50
4-5 ft., 1.95





Lombardy Poplar
Cat. No. 340

SHADE

Neasha

TREES

330—ASH, WHITE. A good all-purpose, well-shaped tree of medium rapid growth and long life, not easily broken in storms. Free from insects and diseases. Hardy.

5-6 ft.	\$1.75	8-10 ft.	\$3.75
6-8 ft.	2.50	10-12 ft.	4.75

332—ELM, CHINESE. One of the fastest growing shade trees. Small leaves; hardy. Stands extreme drought better than most trees, and will grow in poor soil.

4- 5 ft.	Each	3 for	10 for
5- 6 ft.	\$0.80	\$2.10	\$ 6.00
6- 8 ft.	1.00	2.70	7.95
8-10 ft.	1.50	4.00	12.50
10-12 ft.	2.25	6.00	16.50
	3.25	9.00	

334—MAPLE, SILVER. Quick growing and graceful, with deeply cut green foliage, silvery white beneath. Often called Soft Maple. Foliage colors a golden yellow in fall.

5-6 ft.	\$1.50	8-10 ft.	\$3.25
6-8 ft.	2.25	10-12 ft.	4.00

335—MAPLE, SUGAR. One of the best street and park trees. Dense, upright grower, with brilliant colored foliage in the fall. Does well in most any location. The Sugar Maple that maple sugar is made from.

5-6 ft.	\$2.65	8-10 ft.	\$4.95
6-8 ft.	3.50	10-12 ft.	6.50

347—RUBRUM MAPLE. Hardwood tree of medium fast growth. Probably most brilliant foliage of Maple family in fall.

5-6 ft.	\$2.65	8-10 ft.	\$4.95
6-8 ft.	3.50		



Cat. No. 335. Sugar Maple

Cat. No. 333 BROADLEAF HYBRID ELM

The fastest growing tree in America. Hardy, drought and disease resistant. A beautiful budded Elm discovered in our nursery row and from which we have propagated the past ten years. Its leaves are large and dark green. The bark is smooth and branches are straight and strong. Will stand high wind, dry summers and cold winters, and will grow from 8 to 14 feet in one year. The demand for this tree is so great we have never been able to build up a surplus stock, so if you want some of these beautiful, permanent, quick growing trees, you'd better place your order at once as our supply is limited. We offer them in the following sizes:

4-5 ft.	\$1.50	8-10 ft.	\$3.50
5-6 ft.	1.95	10-12 ft.	3.95
6-8 ft.	2.75	12-14 ft.	4.95



339—POPLAR, BOLLEANA. Similar to Lombardy, except the leaves are dark green with silver under side.

4-5 ft.	\$1.00
5-6 ft.	1.25
6-8 ft.	2.00

340—POPLAR, LOMBARDY. Tall, slender trees of rapid growth. Dark green leaves.

	Each	5 for
3- 4 ft.	\$0.40	\$1.75
4- 5 ft.60	2.50
5- 6 ft.75	3.35
6- 8 ft.	1.00	4.35
8-10 ft.	1.25	5.50
10-12 ft.	2.00	9.00

WILLOW, WEEPING. Beautiful, graceful, lacy tree with long, drooping branches, densely covered with fresh green leaves.

A rapid grower. We have either the green barked or golden barked varieties. State preference when ordering.

341—GOLDEN.

5-6 ft.	\$1.50
6-8 ft.	2.00

342—GREEN.

8-10 ft.	\$3.00
---------------	--------

348—AMERICAN LINDEN. Handsome round headed tree with large heart-shaped foliage. Covered in June with greenish white blossoms.

5-6 ft.	\$2.65	8-10 ft.	\$4.95
6-8 ft.	3.50		

336 MAPLE, NORWAY. One of the best trees for street and park, with dense upright growth and brilliant colored foliage in the fall. Will do well in most any location.

5-6 ft.	\$2.65	8-10 ft.	\$4.95
6-8 ft.	3.50	10-12 ft.	6.50

337—MAPLE, SCHWEDLER. Glorious colored foliage in spring of green, red, and purple, turning ruddy green in summer. 5-6 ft., \$3.25.

338—SYCAMORE, EUROPEAN. Lofty tree with large heart-shaped leaves. Straight, symmetrical grower.

5-6 ft.	\$1.75	8-10 ft.	\$3.75
6-8 ft.	2.50		

Cat. No. 330. White Ash



SPECIAL SHADE TREES

Balled and Burlapped

We also have **Pin Oak**, **Sweet Gum**, and **Tulip Tree** which we dig with ball of earth (not suitable for shipment, due to cost of transportation, boxing, etc.), but customers who call at the nursery can take them with them as they are in sizes:

PIN OAK

5- 6 ft.	\$ 5.00
6- 8 ft.	6.50
8-10 ft.	10.00

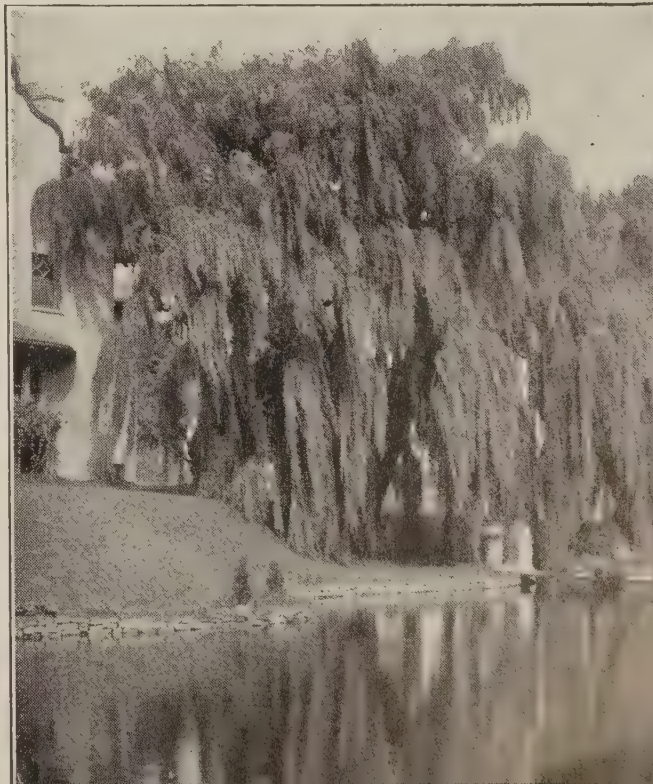
SWEET GUM

5-6 ft.	\$3.95
6-8 ft.	4.95

TULIP TREE

5-6 ft.	\$3.35
6-8 ft.	4.35

Cat. No. 342. Weeping Willow





**FREE
Premiums
With
Every
Order**

**See
Page
31**



**Cat No. 686
Gallant Fox
Dahlia**

Choice Decorative

DAHLIAS

- 685—AVALON.** Large flowers of clear yellow on long stems.
- 686—GALLANT FOX.** Vivid red with sturdy stems and excellent keeping qualities.
- 687—JANE COWL.** A large flower of warm buff and old gold blending to a bright salmon at center.
- 688—MRS. WARNER.** Large flowers of mauve-pink; can be grown to a diameter of 11 inches.
- 689—MRS. GEO. LeBOUTILLIER.** Bright carmine-red, shading to a rich cardinal-red at the center with full petals and deep flower. Average diameter of this Dahlia is 10 inches.
- 690—ROSE GLORY.** Lovely rose-pink, most popular pink; large flowers.

**Each 50c 3 for \$1.25
6 for \$2.25**

**BE SURE
CATALOG
NUMBER IS
ON YOUR
ORDER!**



Cat No. 69—EUONYMUS PATENS

An evergreen shrub with large dark green glossy foliage and bright orange berries in fall. Will grow anywhere. Grows 5 to 6 feet tall, but can be easily kept smaller by shearing once a year. **Fine for foundation planting.**
Super X \$1.35 Select \$1.00 Post Size 80c

BEAUTIFUL HYBRID LILACS

**Fragrant—Bloom First Year
Immense Double Blooms**

Have flowered already in the nursery row and will bloom for you the next year after transplanting. They grow 6 to 8 feet tall and do not sucker like the old-fashioned Lilacs. One of the finest of all shrubs.

30—RED 32—BLUE
31—PINK 33—WHITE
Super X \$1.75
Select 1.25

673—STOPLIGHT. Beautiful new Glad. Tall straight spikes with large ruffled flowers of rich velvety crimson. Outstanding in garden or bouquets.
3 for 30c 6 for 50c 12 for 85c
 See page 17 for complete listing of Glads.



TREE PEONIES

Unusual, rare Tree Peonies which are just as hardy and can be planted in same soil and location as herbaceous Peonies. These grow like bushes or shrubs and do not die down in the winter. Our supply is very limited so order early to avoid disappointment. Following varieties:

- 610—**ATHLETE**. Very large, double flesh-pink flowers.
 611—**LACETA**. Pure white double flowers with pleasing carmine blotch.
 612—**REINE ELIZABETH**. Large double salmon-rose. Our most popular variety.
 613—**SOUV. DE DUCHER**. Double flowers of bright reddish purple.

Each \$6.95 2 for \$12.95 4 for \$22.50

CHOICE IRIS

We attended the National Iris Show for two days, and the Iris we are listing below are some new varieties, some older standards, but each of them the finest of their color on display at the National exhibition.

	Each	Per 3	Per 12
620— BLUE TRIUMPH . Immense light soft blue. 24 in. . . .	\$0.35	\$0.90	\$3.25
621— CALIFORNIA GOLD . Extra large deep yellow. 36 in.35	.90	3.25
622— CHERIO . Falls satiny ruby-red; orange beard35	.90	3.25
623— EL CAPITAN . Giant manganese-violet flowers40	1.00	3.75
624— CRYSTAL BEAUTY . Perfect clear white flowers35	.90	3.25
625— PINK SATIN . Large, lovely pinkish mauve35	.90	3.25
626— JEAN CAYEAUX . Light havana-brown; unusual35	.90	3.25
627— WABASH . White standards; violet falls40	1.00	3.75
628— ELMOHR . Very rich red-violet. 36 in.75	2.00	
629— RED DOUGLAS . Deep, warm velvety garnet75	2.00	
630— MISSOURI . Large flaring medium blue75	2.00	
631— GOLDEN FLEECE . Lemon yellow, creamy falls edged gold .75	.75	2.00	

805—LANDSCAPE IRIS COLLECTION

We have made up this assortment of good varieties in a wide range of colors. Fine for your border.

10 for \$1.95 25 for \$3.75

836—DELUXE IRIS COLLECTION

All selected from named varieties.

- 2 Soft Blue 2 Deep Yellow 2 Lovely Pink
 2 Havana-Brown 2 Ruby-Red

10 for \$2.50

JAPANESE IRIS

Immense flat flowers without standards in rich colors. Bloom in June following other Iris by 3 weeks.

- 643—**ROYAL PURPLE**.
 644—**PURE WHITE**.

Each 50c

- 645—**MAHOGANY-RED**.
 646—**SOFT AZURE-BLUE**.
 4 for \$1.75

DWARF IRIS

Excellent for edging border or rockeries. Bloom in April and May. About 6 inches tall.

- 640—**Purple**. 641—**Yellow**. 642—**White**.
 Each 35c 3 for 75c 12 for \$2.50

628—**Elmohr Iris**



Tree Peony, Reine Elizabeth

PEONIES

Our Peony Roots are big 3-5 eye divisions. Last a lifetime. Hardy as Oaks.

- 600—**MONS. JULES ELIE**. Early. Immense light rose-pink with silver markings. Free bloomer. Each \$1.00; 3 for \$2.75.
 601—**KARL ROSENFELD**. Late red. Rich velvety crimson. Tall. Each \$1.00; 3 for \$2.75.
 602—**EDULIS SUPERBA**. Early, large, dark pink. Very fragrant. Each 85c; 3 for \$2.25.
 603—**FESTIVA MAXIMA**. Early, very large white with crimson markings. Each 85c; 3 for \$2.25.
 604—**FELIX CROUSSE**. Midseason. Dark red. A sure bloomer. Each 85c; 3 for \$2.25.
 605—**THERESE**. Enormous satiny pink blooms changing to lilac-white in center. One of the best. Each \$1.00; 3 for \$2.75.
 606—**WALTER FAXON**. Extra fine. Bright rose, deepening at center. Delicate and distinct color. Midseason. Each \$1.00; 3 for \$2.75.

SPECIAL PEONY COLLECTION No. 800. Our selection of good varieties.

- 1 Red 1 Pink 1 White All 3 for \$1.50.



601—Karl Rosenfield Peony →

NEOSHO

Graceful Hardy VINES

ADD BEAUTY, SHADE AND FRAGRANCE



Cat. No. 441. Boston Ivy

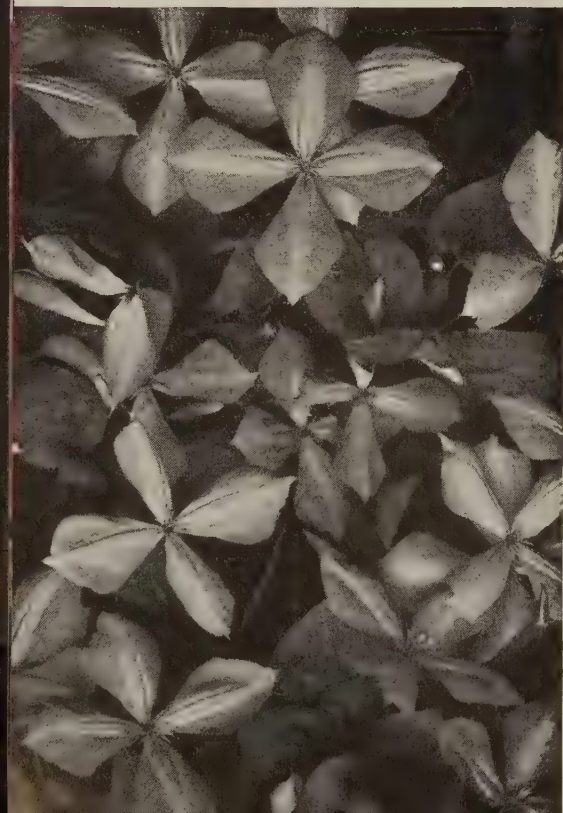
441—BOSTON IVY. The most popular plant for covering brick, stone, or wood. Clings to smoothest surface. Colors beautifully in fall, mottled brilliant orange-red. **Each 60c; 3 for \$1.65.**

442—ENGLISH IVY. Beautiful dark green evergreen leaf. Clings to masonry if used on north or east side where protected from hot sun. **Each 60c; 3 for \$1.65.**

443—EUONYMUS VEGETUS RADICANS. (Big-Leaf Wintercreeper or Evergreen Bittersweet.) Will make a billowy, graceful evergreen foliage plant that will grow on masonry walls if planted nearby. A good "filler" among needle evergreens. Good soil binder and cover for banks. Orange berries in fall and winter. **Each 90c; 3 for \$2.50.**

444—EVERGREEN HONEYSUCKLE. (Hall's.) Fragrant white and yellow flowers, and attractive blue-green foliage which remains most of the winter. Grows anywhere. **Each 50c; 3 for \$1.35; 10 for \$3.95.**

Cat. No. 577. Large Flowering Clematis
Each \$1.25



Cat. No. 449. Silver Lace Vine

445—EVERBLOOMING HONEYSUCKLE. (Heckrotti.) See back page for color illustration. Can be grown as a shrub or vine. Bright rose-red flowers lined with gold. Large blue-green foliage. Blooms all summer and is perfectly hardy. **Each 80c; 3 for \$1.95; 10 for \$3.95.**

446—WISTERIA. Our plants are grafted and sure to bloom. Beautiful lilac-purple. **Each \$1.00; 3 for \$2.75.**

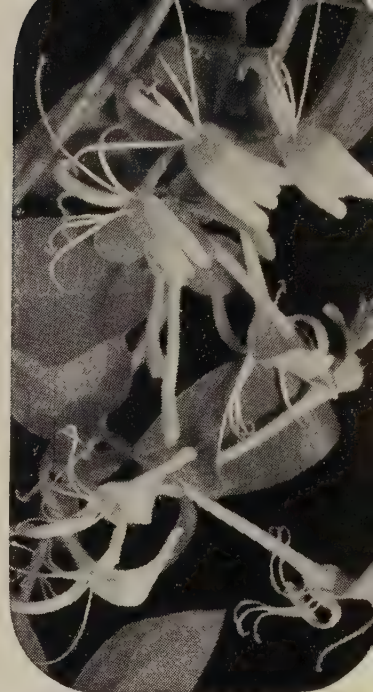
447—DOUBLE VIOLET WISTERIA. The only double Wisteria known in this country, and has the darkest colored flowers of all. They are exactly like dark-colored purple Violets borne in clusters about 15 to 18 inches long. Very free bloomer. 3-year plants; may be trained to tree form. **Each \$2.50.**

448—PINK WISTERIA. This is the finest pink Wisteria we have ever seen. Clusters about 15 to 18 inches long. Slow to commence flowering, but once started it blooms profusely. 3-year plants; may be trained to tree form. **Each \$2.50.**



Cat. No. 440. Bittersweet

440—BITTERSWEET. Clusters of orange-scarlet berries; when dried make lovely winter bouquets. Plant two for pollination. **Each 60c; 3 for \$1.65.**



Cat. No. 444. Evergreen Honeysuckle (Hall's)
Each 50c

449—SILVER LACE VINE. The Silver Lace Vine often grows 20 feet the first season. Thousands of fleecy white flowers in late summer. Hardy and easy to grow. **Each 85c; 3 for \$2.25.**

450—PURPLE-LEAF HONEYSUCKLE. (Lonicera Japonica Purpurea.) An evergreen Honeysuckle with long dark green leaves which take on a purple hue in the winter time. The blossom is yellow and white with pink shading on outside. Perfectly hardy and can be trained as a dwarf compact shrub if desired. **Each 75c; 3 for \$1.95.**

451—TRAILING MYRTLE. (Vinca Minor.) A trailing evergreen plant for carpeting ground under shrubs or trees where it is too shady for grass to grow. **2-yr., No. 1 plants: Each 65c; 3 for \$1.50; 10 for \$4.50.**

Large Flowering Clematis

Each \$1.25; 3 for \$3.00.
Clematis are one of the most beautiful of all flowering vines. On a trellis, fence or porch their large flowers are a glorious sight.

577—CLEMATIS JACKMANI. The popular purple variety with large, purple-blue flowers.

575—CLEMATIS, MME. ANDRE. Large purplish crimson flowers.

578—CLEMATIS, RAMONA. Beautiful sky-blue flowers.

579—CLEMATIS HENRYI. A large flowering white Clematis of unusual size and beauty. Flowers in profusion in June.

580—CLEMATIS PANICULATA. Easy to grow, perfectly hardy, rapid growth. Fragrant white starlike flowers in late summer and early fall.

PLEASE ORDER BY CATALOG NUMBER

Cat. No. 451
Trailing Myrtle—Each 65c





No other flowers will give such a brilliant display all summer to fall as a bed of our Cannas. Do not plant too early. Wait until ground is warm, and plant 18 inches apart and 6 inches deep. Bloom first year.

- 694—**PRESIDENT.** Immense flowers of rich scarlet. Green foliage. 4 ft.
 695—**KING HUMBERT.** Orange-scarlet. Bronze foliage. 4 ft.
 696—**YELLOW HUMBERT.** Yellow flowers with red spots. Green foliage. 4½ ft.
 697—**CITY OF PORTLAND.** Coral-pink. Green foliage. 4 ft.
 3 for 50c 6 for 90c 12 for \$1.65



Cat. No. 696
Yellow Humbert Canna



Gladiolus

GOLD MEDAL *Gladiolus*

New Prize Winning Varieties

Large size bulbs. We guarantee our Gladiolus bulbs to please you when they bloom. Fine large bulbs. Plant after danger of frost is over 6 in. deep and 8 in. apart.

3 for 30c 6 for 50c 12 for 85c 25 for \$1.50

- 668—**BEACON.** Beautiful, striking, ruffled flower of brilliant vermilion-scarlet with light yellow throat. Stately, straight spikes.
 669—**CORONA.** Beautiful new Glad with large flowers of ivory-white edged pink on excellent spikes. Profuse bloomer.
 670—**ETHEL CAVE COLE.** The finest, largest shell-pink. Flowers are immense and pure even shade of shell-pink. Big spikes with 8 to 10 flowers open at once.
 671—**SNOW PRINCESS.** The finest white with very tall, strong spikes and immense flowers of pure snow-white.
 672—**VEE CREAM.** Large ruffled golden yellow blossoms with cardinal-red throat blotch. 6 to 8 flowers open at once.
 673—**STOPLIGHT.** A magnificent new variety that is called the perfect red. Tall, straight spikes with large, exquisitely ruffled flowers of rich velvety crimson.

Cat. No. 806—DELUXE COLLECTION

A collection of finest varieties in the larger bulbs. Flowers large. Blooms that will delight you.

15 for \$1.00 35 for \$2.00 75 for \$3.50

Cat. No. 802—RAINBOW COLLECTION

These are best quality medium size bulbs in a wide color range. Guaranteed to bloom and please you.

25 for \$1.35 50 for \$2.25 100 for \$3.95

HARDY LILIES *Bloom This Summer*

650—**REGAL.** One of the most beautiful and hardiest Lilies grown. Center of flower flushed with yellow shading to white. Outside of petals are streaked with brown shaded with pearly tint. Very floriferous.

Each 40c 3 for \$1.00

651—**CORAL.** A charming little early flowering Lily with strongly recurved petals of waxy texture. Deep scarlet.

Each 35c 3 for 95c

652—**EMERALD.** Long, lovely white flowers with a beautiful emerald-green throat. Bloom from August until frost. Easy to grow and perfectly hardy.

Each 50c 3 for \$1.35

653—**SPECIOSUM RUBRUM.** The loveliest of all Lilies. Flowers bright pink edged white. Blooms in August and and September on stems 3-4 feet tall. Will come up every year. Very scarce and our supply quite limited.

Each 85c 3 for \$2.50

Cat. No. 661
Geo. Yeld Day Lily



DAY LILIES (Hemerocallis)

660—**CINDERELLA.** Beautiful red-copper petals of an unusual shade. One of the best. Blooms in July.

Each 35c; 3 for 90c.

661—**GEO. YELD.** A magnificent Day Lily. Wide open petals 6 inches across. Canary-yellow, brushed red, deep red in throat, terminating in a bright yellow star.

Each 45c; 3 for \$1.20.

662—**OPHIR.** Deep golden yellow trumpet-shaped flowers, 5 inches across, borne 25 to 30 on stem. July and August.

Each 50c; 3 for \$1.25.

663—**DR. REGEL.** Rich canary-yellow flowers in early March. Very fragrant.

Each 35c; 3 for 90c.



Cat. No. 653
Speciosum Rubrum Lily
Each 85c

DAY LILY COLLECTION Cat. No. 801

One each, Cinderella, Geo. Yeld, Ophir and Dr. Regel to give you long period of bloom.
All 4 for \$1.25

Neosha Patented

HEAVY SPECIMEN, 2-YEAR, No. 1, WESTERN



Cat. No. 107—TALLYHO
(Pat. No. 828)
Each \$1.75 3 for \$4.50



Cat. No. 109—LOWELL THOMAS
(Pat. No. 595)
Each \$1.50 3 for \$3.75



Cat. No. 101—CHARLOTTE ARMSTRONG
(Pat. No. 455)
Each \$1.50 3 for \$3.75

Cat. No. 110—NEW YORKER
(Pat. No. 823)
Each \$2.00 3 for \$5.00



New Yorker SPECIAL

Cat. No. 809

- 1 New Yorker
- 1 Lowell Thomas
- 1 Tallyho
- 1 Show Girl
- 1 Nocturne
- 1 Charlotte Armstrong

All 6 for \$8.50

ROSES

**SPRING
SHIPMENT
ONLY**

GROWN ROSES WILL BLOOM THE FIRST YEAR

100—CRIMSON GLORY. (Pat. No. 105.) A deep crimson with a velvety sheen. Perfect buds open into large, magnificent blooms. Very fragrant, hardy bush. One of the finest deep reds.

Each \$1.50 3 for \$3.75

101—CHARLOTTE ARMSTRONG. (Pat. No. 455.) This fine Rose is making a remarkable record. Best new American Rose since 1935. Lovely long streamlined buds open to enchanting full blown flowers. No picture can do the color justice. The buds are carmine and the open flower cerise, beautiful in all States. Long stems fine for cutting.

Each \$1.50 3 for \$3.75

102—FORTY-NINER. (Pat. No. 702.) All-America Award for 1949. The most brilliantly hued bicolored ever introduced. Inside of petals a vivid Oriental red while outside is a chrome-yellow. It makes a beautiful plant in the garden, tall and vigorous. Colors are lasting and bright until the last petal drops. Long-shaped buds open into well-shaped blooms.

Each \$1.75 3 for \$4.50



Cat. No. 111—Nocturne (Pat. No. 713)
Each \$1.50 3 for \$3.75



Cat. No. 112—Show Girl (Pat. No. 646)
Each \$1.50 3 for \$3.75

104—PEACE. (Pat. No. 591.) Won the All-America Rose Award for 1946 with the highest score ever given a new Rose. It is a vigorous, healthy grower with shiny dark green foliage. No picture can do justice to this truly great Rose. The perfect buds open into large, fully double fragrant flowers. Its greatest charm is the changing panorama of colors. At first the buds are a rich gold edged cerise. As the outer petals unfold the gold changes to canary, then lightens to creamy ivory. The cerise edge gradually deepens and becomes broader, so the fully open flower appears a sparkling cerise with a creamy yellow base. The flowers last a long time, and are beautiful at all stages.

Each \$2.00 3 for \$5.00

107—TALLYHO. (Pat. No. 828.) Beautiful deep cardinal-red buds, remarkably handsome open flowers with many petals, rich spicy fragrance. Inside of petals is a delightful shade of pink, outside is a rich crimson. A unique color scheme never before seen in a Rose.

Each \$1.75 3 for \$4.50

108—CAPISTRANO. (Pat. No. 992.) All-America Rose Winner for 1950. A vigorous and sturdy Hybrid Tea, producing unusually large buds and flowers of rich, warm rose-pink color and heavy fragrance on extra long stems.

Each \$2.00 3 for \$5.00

109—LOWELL THOMAS. (Pat. No. 595.) All-America Rose Selection Award for 1944. Perfect buds opening into chrome-yellow flowers with delicate fragrance. Retains color well.

Each \$1.50 3 for \$3.75

110—NEW YORKER. (Pat. No. 823.) Beautiful buds open into scarlet flowers of rose-red undertones with a rich velvety sheen. Unfading blooms even in hottest of weather. Delightful raspberry-like fragrance.

Each \$2.00 3 for \$5.00

111—NOCTURNE (Pat. No. 713.) All-America Rose Selection Award, 1948. Flowers are dark red with maroon shadings, and pleasantly fragrant. This Rose has one of the most perfect buds of any red Rose.

Each \$1.50 3 for \$3.75

112—SHOW GIRL (Pat. No. 646.) Blooms are rich, deep pink on long stems. Extra heavy plant, producing amazingly long buds, excellent for cutting.

Each \$1.50 3 for \$3.75

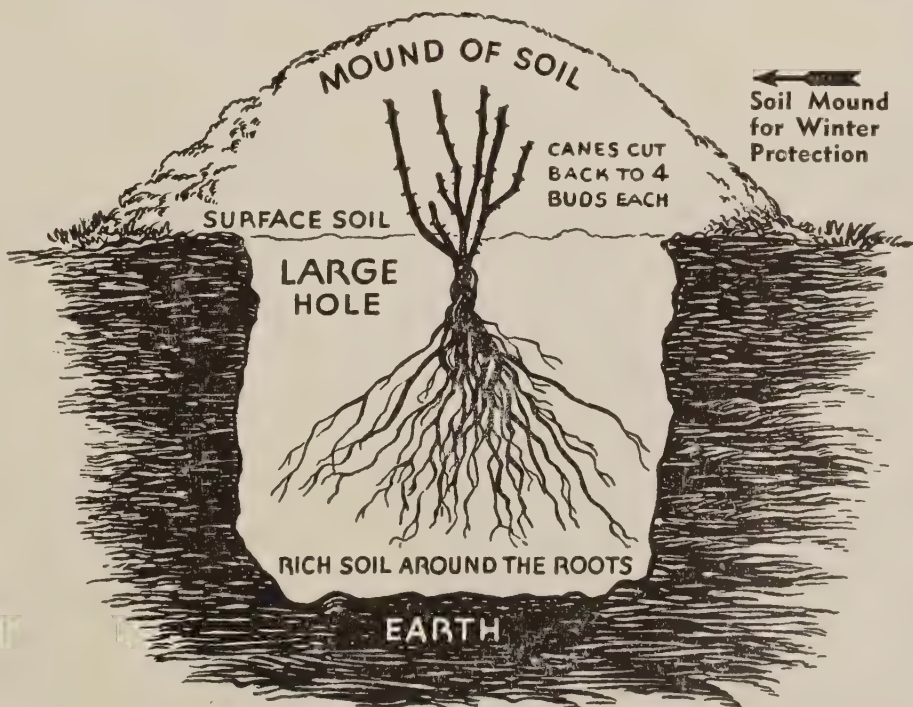
COMPLETE PATENTED ROSE COLLECTION

Cat. No. 811

1 each of all Patented Roses described on this page.

(Illustrated here and front cover.)

All 10 for \$14.25



Correct Planting, Pruning and Protection

We Handle Only the Best Quality Roses, Big, Strong, Healthy, 2-Year, No. 1,

Neasha's **EVERBLOOMING**

**SPRING
PLANTING
RECOMMENDED**



Cat. No. 123
Christopher
Stone



Cat. No. 122
McGredy's
Yellow

Cat. No. 126
Poinsettia



Cat. No. 131
Editor
McFarland



Cat. No. 118
Edith
Nellie
Perkins

- 115—**BETTY UPRICHARD.** Delicate salmon-pink with outside of petals coppery carmine. Very fragrant.
- 116—**CONDESA DE SASTAGO.** Beautiful blooms of fiery copper inside and rich gold on the reverse. Fragrant and a good strong grower.
- 117—**DUQUESA DE PENARANDA.** Double flowers of apricot-peach color; very fragrant. Attractive foliage.
- 118—**EDITH NELLIE PERKINS.** Shapely two-toned pink flowers, coppery rose outside and soft salmon-pink inside. Profuse bloomer.
- 119—**ETOILE DE HOLLANDE.** Large deep crimson flowers with velvety finish and rich fragrance. Good foliage. One of the finest red Roses.
- 131—**EDITOR McFARLAND.** Long, pointed buds, fragrant flowers of clear brilliant pink with strong stems. Excellent for cutting. Long lasting.
- 120—**K. A. VICTORIA.** Creamy buds and perfect delicate white flowers, tinted lemon-yellow at center. Double.
- 121—**McGREDY'S IVORY.** Perfectly formed long, pointed buds of ivory-white. Always in flower.
- 123—**CHRISTOPHER STONE.** A brilliant sparkling crimson-scarlet; shapely, long, pointed buds with spicy fragrance; heavy bloomer.
- 122—**McGREDY'S YELLOW.** Unfading canary-yellow flowers of excellent form. Dark, glossy, Hollylike foliage.
- 124—**MRS. CHARLES BELL.** A sport of Red Radiance with flowers of similar form, but of delicate salmon-pink coloring.
- 132—**MRS. P. S. DU PONT.** Double flowers of rich gold; spicy fragrance. Plants bushy and foliage attractive.

**FIVE-STAR COLLECTION
No. 812**

All 5 of the beautiful monthly-blooming Roses illustrated on this page (20).

Christopher Stone Editor McFarland
McGredy's Yellow Poinsettia
Edith Nellie Perkins

ALL 5 FOR \$4.95

Extra Heavy Specimen Plants.
Field-Grown, 2-Yr., No. 1 Roses.

**ALL-STAR
COLLECTION No. 814**

All 11 of the outstanding Roses illustrated in color on this double-page spread (pages 20-21).

ALL 11 FOR \$10.75
Plus 1 Mrs. Chas. Bell
Extra Heavy Specimen
Plants, Field Grown,
2-Year, No. 1.

Western Grown Specimens That Will Thrive and Bloom the First Year

ROSES Bloom First Year

- 125—**PRES. HOOVER.** Large flowers of flaming scarlet and yellow in bud, opening to soft creamy yellow with scarlet markings. Long stems.
- 126—**POINSETTIA.** Semi-double flowers of bright rich scarlet. Rich tea fragrance. Good bloomer.
- 127—**RADIANCE.** Globular cup-shaped flowers of two-toned pink. Vigorous, free blooming. Most popular pink Rose grown.
- 128—**RED RADIANCE.** Deep red sport of Radiance and exactly like it except for color.
- 129—**ROUGE MALLERIN.** Deep rich red with velvety texture; does not fade or blue. Very fragrant, a healthy grower. Our favorite red Rose.
- 130—**THE DOCTOR.** One of the outstanding new Roses. The buds are long and pointed, expand to simply enormous blooms. Color is an exquisite silvery pink, uniform in color both in bud and open flower, with a fragrance so intense, that it can be detected many yards away.

PRICES

Heavy, 2-Year, No 1,
Field-Grown

Each \$1.10 3 for \$3.00
12 for \$10.80

These prices cover all Roses
either illustrated or described
on this spread (pages 20-21).

Cat. No. 119
Etoile
de Hollande

**ALL-COLOR
COLLECTION No. 813**
All six of the beautiful
monthly-blooming Roses
illustrated on this page
(21).
Heavy, 2-Year, No. 1,
Field-Grown Plants.
ALL 6 FOR \$5.90

Cat. No. 125
Pres.
Hoover

Cat. No. 120
K. A. Victoria

Cat. No. 130
The Doctor

Cat. No. 116
Condesa
de Sarango

Cat. No. 132
Mrs. P. S.
Du Pont

Neasha Everblooming

Unexcelled for Decorating Fences,



Cat. No. 158—Climbing New Dawn
Each \$1.50

166—CLIMBING BLAZE. The ever-blooming Paul's Scarlet. **Each \$1.25.**

160—CLIMBING DR. J. H. NICOLAS. (Pat. No. 457.) New hardy everblooming climbing Rose with double rose-pink flowers on long stems. Hardy and disease resistant. Grows more like a pillar Rose. **Each \$1.50; 3 for \$3.75.**

155—CLIMBING K. A. VICTORIA. Soft pearly white shading to light lemon in center. **Each \$1.25; 3 for \$3.45.**

156—CLIMBING MRS. P. S. DU PONT. Deep golden yellow; semi-double. **Each \$1.25; 3 for \$3.45.**

158—CLIMBING NEW DAWN. Hardy, everblooming climber. A sport of Dr. Van Fleet. Rose-pink blossoms on long stems. Profuse bloomer. **Each \$1.25.**

167—CLIMBING PEACE. (Pat. No. 932.) Same large, beautiful blooms as bush Peace, but many more blooms. **Each \$2.00; 3 for \$5.10.**

159—CLIMBING RED TALISMAN. Long, pointed buds of cerise-red. Very fragrant. **Each \$1.25.**

157—CLIMBING TALISMAN. Two-toned red and gold. **Each \$1.25; 3 for \$3.45.**

Hardy Climbing Roses

162—CLIMBING AMERICAN BEAUTY. A strong grower with large, fragrant, crimson flowers. **Each \$1.00; 3 for \$2.75; 12 for \$9.95.**

161—CLIMBING DOUBLOONS. (Pat. No. 152.) The best hardy yellow climber. Large, golden yellow flowers—semi-double over a long period. Glossy green foliage. **Each \$1.50; 3 for \$3.75.**

164—CLIMBING PAUL'S SCARLET. Brilliant scarlet, semi-double flowers; very striking. **Each \$1.00; 3 for \$2.75; 12 for \$9.95.**

Please

Order By

Catalog Number

EVERBLOOMING CLIMBER COLLECTION NO. 808

These 3 outstanding monthly blooming climbers at a new low special price:

1 BLAZE 1 NEW DAWN 1 TALISMAN

See descriptions above and at right

3 for \$3.50

Neasha Everblooming Baby Roses

Cat. No. 147. Pinocchio—Pat. No. 484



Fine for cemetery planting, in front of evergreens, or in solid beds. Use them anywhere you want. Constant bloom from June till frost. Hardy as any shrub. Bloom first year.

140—CHEERIO. A profuse bloomer, with deep pink double flowers. **Each \$1.10; 3 for \$3.00; 12 for \$10.75.**

141—ELSE POULSEN. Semi-double apple-blossom-pink flowers on tall erect stems. **Each \$1.10; 3 for \$3.00; 12 for \$10.75.**

142—FLORADORA. Constantly in bloom with brilliant rust-red flowers. One of the best. **Each \$1.10; 3 for \$3.00; 12 for \$10.75.**

144—IDEAL. Dark red, single blooms in large clusters. **Each \$1.10; 3 for \$3.00; 12 for \$10.75.**

143—IMPROVED LAFAYETTE. Cheerful cherry-red, semi-double flowers all summer. **Each \$1.10; 3 for \$3.00; 12 for \$10.75.**

145—ORANGE TRIUMPH. Brilliant orange-scarlet flowers in huge clusters. **Each \$1.10; 3 for \$3.00; 12 for \$10.75.**

149—FASHION. (Pat. No. 789.) Top All-America Winner 1950. Buds of Oriental red, blooms of luminous pink, overlaid with gold, that then deepen into clear coral, with reddish tones. Extra heavy bloomer, and a "must" for every garden. **Each \$2.00; 3 for \$5.10.**

150—GOLDILOCKS. (Pat. No. 672.) True golden yellow Floribunda. Fresh ovoid shaped buds keep an abundant mass of bloom. Dark foliage. **Each \$1.50; 3 for \$3.75.**

147—PINOCCHIO. (Pat. No. 484.) Pointed salmon buds; salmon flushed gold. Blooms in huge clusters. **Each \$1.25; 3 for \$3.15.**

148—RED PINOCCHIO. (Pat. No. 812.) Buds are deep satiny carmine on outside and bright carmine on inside. Delightful fragrance. **Each \$1.50; 3 for \$3.75.**

Climbing ROSES

Arches, Porches and Garages



Cat. No. 160. Dr. Nicolas
Pat. No. 457
Each \$1.50; 3 for \$3.75



Cat. No. 161. Doubleloons—Pat. No. 152
Each \$1.50; 3 for \$3.75

Please Order
by Catalog Number

Radiance Special No. 833
Heavy Specimen, 2-Yr., No. 1
2 Red, 1 Pink, 1 White, 1 Shell-Pink
All Five for \$5.25
Radiance Roses are big, strong,
thrifty growers. Profuse bloomers.
Resistant to leaf spot. Ideal Rose
for the beginner.



Cat. No. 166. Blaze
Everblooming Paul's Scarlet
Each \$1.25



Cat. No. 149. Fashion
Pat. No. 789
Each \$2.00; 3 for \$5.10

PATENTED FLORIBUNDA COLLECTION
No. 831

One each of patented varieties described.
FASHION GOLDILOCKS PINOCCHIO
RED PINOCCHIO
All Four for \$5.25

SPECIAL FLORIBUNDA COLLECTION
No. 832

Most popular standard everblooming varieties.
A constant array of bloom from spring till frost.
CHEERIO ELSE POULSEN FLORADORA
IMP. LAFAYETTE IDEAL
ORANGE TRIUMPH
All Six for \$5.75

Cat. No. 143. Improved Lafayette
Everblooming Floribunda
Each \$1.10; 3 for \$3.00



Cat. No. 144. Baby Ideal
Everblooming Polyantha
Each \$1.10; 3 for \$3.00



FRESH FROM YOUR OWN GARDEN



Cat. No. 454. MacDONALD Rhubarb

Small, 5/8-inch, whole roots.....	3 for	6 for	12 for
Medium, 1 -inch, whole roots.....	\$0.40	\$0.65	\$1.10
Large, 1 1/2-inch, whole roots.....	.60	1.00	1.75
	.75	1.25	2.35

454—MacDONALD RED RHUBARB. The best large red Rhubarb with stalks of giant size; tender and sweet, requiring less sugar. Stays tender far into the summer. Can be grown only from divisions, which makes it cost more, but you get the genuine red, giant size, heavy producing strain.

Large divisions	Each	3 for	6 for
	\$0.75	\$1.85	\$3.25

You Will Know the Delight of Delicious Tender Rhubarb and Asparagus

ASPARAGUS

452—ASPARAGUS, MARY WASHINGTON. The best Asparagus whether for home use or market. This variety was developed by the U. S. Department of Agriculture, and is rust resistant. It is earlier, stalks are larger, more tender, more productive, than any other variety.

Heavy, 1-year	Jumbo, 2-year
25 for \$1.25	25 for \$1.75
50 for 1.75	50 for 3.00
100 for 3.00	100 for 4.25
200 for 5.25	200 for 6.95
500 for 11.95	500 for 12.95
1000 for 20.00	1000 for 24.00

HORSERADISH

455—CRISP, SNAPPY HORSERADISH. True Maliner Kren which has that crisp, snappy taste without bitterness. Will grow on most any soil.

	3 for	7 for	16 for
Crowns	\$0.50	\$1.00	\$2.00

RHUBARB

453—RHUBARB, VICTORIA. A giant red-stalked variety; early, tender, with mild acid flavor.

	3 for	6 for	12 for
	\$0.40	\$0.65	\$1.10
	.60	1.00	1.75
	.75	1.25	2.35



Cat. No. 452. Mary Washington Asparagus—25 2-yr. for \$1.75

CURRENTS—GOOSEBERRIES

400—PIXWELL GOOSEBERRY. A wonderful new variety, practically thornless with immense oval berries produced in great abundance. Fruit hangs away from stems, making it easy to pick. One of the best for jellies, preserves and sauce.

Each 75c	5 for \$3.75	10 for \$6.50
----------	--------------	---------------

401—OREGON CHAMPION GOOSEBERRY. The ranking Gooseberry in both size and quality. Extra large, pale, transparent berries of unexcelled quality. Brings highest prices. Wonderful for pies and preserves.

Each 60c	5 for \$2.50	10 for \$4.50
----------	--------------	---------------



Cat. No. 400. Pixwell Gooseberry—Each 75c

402—RED LAKE CURRANT.

A newer Red Currant with larger berries, superior quality and flavor. Hardy and heavy yielding.

Each 60c	5 for \$2.50	10 for \$4.50
----------	--------------	---------------

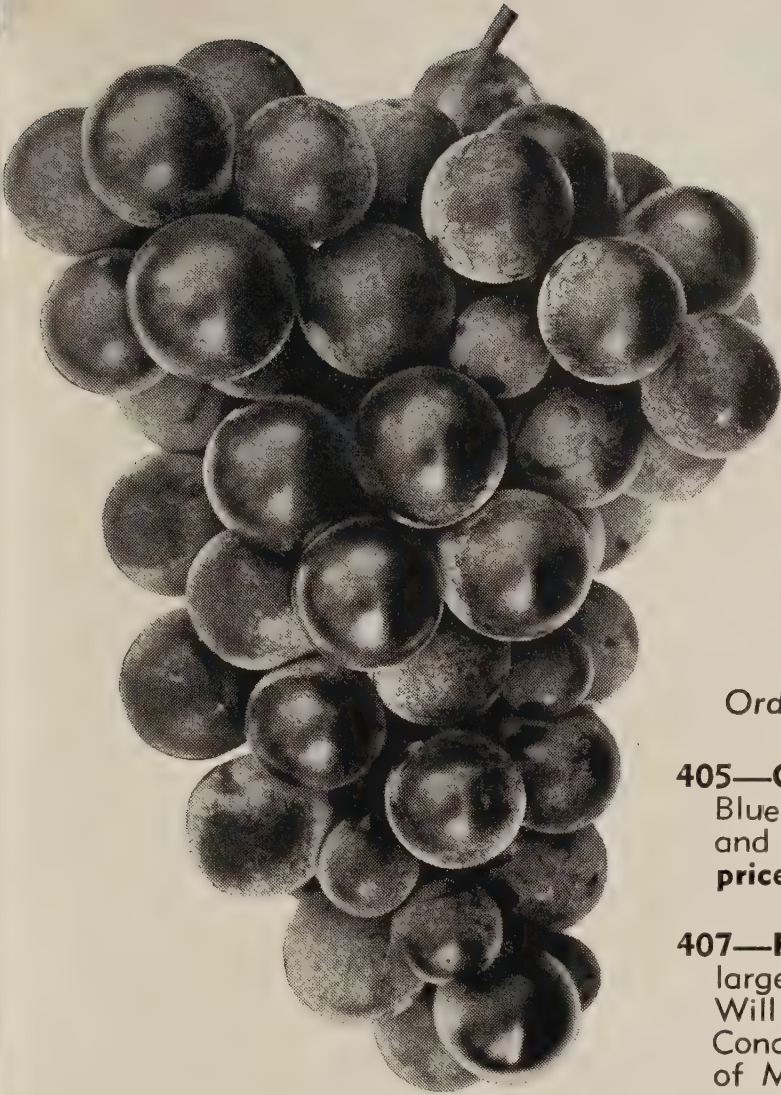
"May I say that the shipment just received was the finest stock I have received for several years. Enclosed is additional order with check enclosed."

RICHARD W. HICKS.
Akron, Ohio.



PLEASE ORDER BY CATALOG NUMBER

Cat. No. 402 Red Lake Currant Each 60c



Cat. No. 407. Fredonia Grape
2-yr., No. 1, each 30c; 10 for \$2.15.

NEOSHO GRAPES
Bear Every Year
Last a Lifetime • Easy to Grow
HEALTHFUL • WHOLESOME • APPETIZING
 Butter, Juice, and Fresh for the Table
 Fine for Jelly

Order By Catalog Number

405—CONCORD. The standard Blue Grape; good size, hardy and productive. **See special price.** →

407—FREDONIA. A new variety; large, juicy, delicious berry. Will produce 50% more than Concord. Ripens 10 days ahead of Moore's Early. **See special price.** →

SPECIAL PRICES
on Concord, Fredonia

Super X, 2-Year No. 1	
Each	\$ 0.30
5 for	1.20
10 for	2.15
25 for	4.75
100 for	16.00
1-Year No. 1	
Each	\$ 0.25
5 for	1.00
10 for	1.75
25 for	3.95
100 for	12.50

Commercial growers write for prices on larger quantities. Specify varieties, quantities, sizes.

Prices On Varieties Listed Below

NEOSHO SUPER X. 2-year, No. 1. Our biggest, bushy, well-rooted vines—often bear first year after planting.			
Each \$0.40	5 for \$1.75	10 for \$2.75	25 for \$5.75
NEOSHO. 1-year, No. 1. Thrifty, well-rooted, 1-year plants.			
Each \$0.30	5 for \$1.20	10 for \$2.15	25 for \$4.75

WHITE VARIETIES

- 410—NIAGARA.** Larger bunches and berries than Concord—excellent quality. Ripens about with Concord.
- 413—PORTLAND.** Large amber-white berries with delicious rich spicy flavor. Vigorous, hardy and productive.

RED VARIETIES

- 409—AGAWAM.** Large red berries, sweet and aromatic. Ripens after Concord.
- 412—CACO.** Extra large red berries, sweet and delicious. Heavy producer. Bears young.
- 414—DELAWARE.** Extra sweet Red Grape. Small bunches and berries of extra good quality.

BLUE VARIETIES

- 406—CAMPBELL'S EARLY.** Large bunch and berry, high quality. Ripens 2 weeks ahead of Concord.
- 408—MOORE'S EARLY.** Ripens 2 weeks ahead of Concord. **See special price.**
- 411—SHERIDAN.** Late blue-black Grape. Ripens a week after Concord. Sweet, rich flavor. Large berries. Heavy bearer.

★ **Red, White and Blue GRAPE SPECIAL No. 819** ★

This assortment particularly chosen for hardiness, long season, wonderful flavor, easy to grow. An ideal assortment for every home owner.

2 Concord 2 Fredonia 2 Agawam 2 Niagara

8 Sturdy Vines for \$1.95
(Regular Value \$2.35)



SEE FREE PREMIUMS ON PAGE 31

Cat. No. 410
Niagara (White)
2-yr., No. 1
Each 40c;
5 for \$1.75

Strawberries-

Superfection

427—NEW EVERBEARER. Considered by many to be the best everbearing in production today. Fruit is large, bright red, firm, and very sweet. A good plant maker, heavy producer and one that should be included in every garden.

25 for \$1.75	200 for \$ 8.95
50 for 3.00	500 for 20.00
100 for 5.00	1000 for 35.00

STREAMLINER

420—EVERBEARING STRAWBERRIES

**Everbearing Strawberries Will Bear This Summer and Fall
Large Size—Wonderful Color—Delicious Flavor**

The outstanding everbearing Strawberry. Very large berries of rich red color and the finest flavor and quality of any Strawberry. Starts bearing 60 to 90 days after planting, and you will have berries right up to heavy frosts. It is a heavy bearer and self-pollenizing. It has everything, large size, excellent flavor, good color, and is a heavy bearer. Be sure and plant some Streamliner—the best berry there is. **Prices below, same as Gem.**

Cat. No. 421—GIANT GEM (Everbearing)

Will bear this summer and fall. Everyone should have some everbearing Strawberries. Do you know anything that tastes better than home-grown, fresh, sweet, juicy Strawberries? They bear quickly and don't require much space.

Giant Gem is a very popular variety, as it does well anywhere. Highly productive with large, firm, bright red berries of delicious flavor. They will start bearing 60 to 90 days after planting. Some customers report fresh berries at Thanksgiving.

25 for \$1.25	200 for \$ 6.00
50 for 2.00	500 for 12.00
100 for 3.50	1000 for 22.50

Prices are not increased over last year. Quantity rates, however, are subject to change without notice.

**BE SURE CATALOG NUMBER
IS ON YOUR ORDER**

[26]

**Cat. No. 421
Giant Gem Everbearing**

**Cat. No. 427
Superfection
New Everbearer**



Neash's
**HONEY SWEET
 VARIETIES**

Cat. No. 425
 New Robinson

**All Varieties
 Offered are
 Self-Pollenizing**

Since best results are obtained from spring planting we ship all Strawberries in **spring only**. Order now for spring shipment.

Anyone can grow Strawberries. Have them fresh from your garden.



**425
 NEW
 ROBINSON**

A SCARLET BEAUTY—sweet, solid berries—long fruiting period—heavy producer. One of the fanciest and most attractive Strawberries ever introduced. Uniform, extra large, scarlet berries are solid red all the way through, with a delicious sweet flavor. A thrifty plant maker with heavy, light green foliage. Ripens just after Blakemore and fruits over a long period, holding its large size to the last picking.

25 for \$1.00 50 for \$1.65 100 for \$2.50 200 for \$4.00 500 for \$8.50 1000 for \$15.00

ORDER BY CATALOG NUMBER

424—AROMA. (Midseason to late.) The favored midseason shipping berry, which has made the Ozarks famous as producers of the world's finest berries. Large, firm, delicious berries which stand shipping extra well. Brings top prices on every market.

PRICES FOR BOTH AROMA and BLAKEMORE

25 for \$0.75 100 for \$2.00 500 for \$ 6.00
 50 for 1.25 200 for 3.50 1000 for \$10.95

Local growers call office for larger quantity rates.

422—SENATOR DUNLAP. A very popular berry, for home use and local market, noted for dependability and productivity. A medium sized deep glossy red berry of rich, sweet flavor and wonderful quality. The ideal table berry.

25 for \$0.90 200 for \$ 3.95
 50 for 1.50 500 for 7.50
 100 for 2.25 1000 for 13.50

Introducing ARMORE!
 Cat. No. 426

An outstanding new Aroma-Blakemore cross released by the University of Missouri. It is a large, sweet, firm berry that you can ship a thousand miles. Heavy plant maker and one that thrives on old ground. Begins to ripen with the last Blakemore and lasts through the Aroma season. It seems to have all the best characteristics of both varieties and is the most promising new berry for the commercial grower in years.

25 for \$1.50 200 for \$ 6.95
 50 for 2.50 500 for 12.95
 100 for 3.95

423—BLAKEMORE. Extra early, bright red berry. Highly flavored and a tremendous yielder; self-pollenizing. A heavy plant maker. Easy to develop a full wide row the first season. Fine for quick freezing storages. Thrifty and prolific, and adapted to varied soil and climatic conditions. A money maker wherever Strawberries will grow. Our plants are "yellows" free.

Cat. No. 426
 Armore



**ALL-SEASON
 STRAWBERRY
 SPECIAL**
 Cat. No. 817
 This special bargain offer will furnish you with sufficient plants to supply the average family with berries throughout the season.
 25 Streamliner
 25 Giant Gem
 50 Blakemore
 50 Aroma
 Regular Value \$5.00
**Special Price:
 150 for \$3.75**

Neosho's
Delicious

Berries

BLACKBERRIES

No. 1, Bearing Age Plants

415—McDONALD. Very early. Large, oblong, very good quality; drought resistant, vigorous grower. Plant in rows 8 to 10 feet apart. The vines trail the first season like Dewberry, but grow upright the next year. We will include with each 25 McDonald plants, 5 plants FREE of Early Harvest for cross pollination. Plant every fourth or fifth plant. Best Blackberry for size, quality and production.

25 for \$2.95 200 for \$17.50
50 for 5.50 500 for 34.50
100 for 9.75

FREE—5 Early Harvest with each 25 McDonald.

416—EARLY HARVEST. Glossy jet-black berries of medium size and excellent quality. Heavy bearer and very hardy. Ripens early, ahead of dry weather.

10 for \$1.50 100 for \$ 9.75
25 for 2.95 200 for 17.50
50 for 5.50 500 for 34.50

417—ELDORADO. The hardest, best quality Blackberry. Thrives on poor soil. Large, firm, sweet flavored berries, almost coreless. Ripens over a long period. A heavy regular bearer.

10 for \$1.50 100 for \$ 9.75
25 for 2.95 200 for 17.50
50 for 5.50 500 for 34.50

Cat. No. 415
McDonald Blackberry
25 for \$2.95

RASPBERRIES

BLACK RASPBERRIES

No. 1, Tip Plants

431—CUMBERLAND. Midseason. Berries are large, fine and sweet. Cumberland has been the standard blackcap for many years. Plants are self-supporting, non-suckering. Plant in early spring.

10 for \$1.50 50 for \$5.50 500 for \$34.50
25 for 2.95 100 for 9.90 1000 for 59.50
200 for 17.50

432—MORRISON. This new berry is drought resistant and ripens a little later than Cumberland. Berries of immense size, very sweet and juicy. Plants are healthy, vigorous growers. The best late Black Raspberry.

10 for \$1.75 50 for \$6.00 200 for \$19.50
25 for 3.50 100 for 10.95 500 for 39.95

433—SODUS. Berries large, firm and excellent quality. Extremely hardy, drought resistant and not subject to winter injury; does not require winter protection even in Minnesota. A great shipping and canning berry because of its wonderful keeping qualities. Produces fruit of large size, fine color and good flavor. Most productive Raspberry.

10 for \$1.95 50 for \$6.75 200 for \$22.50
25 for 3.95 100 for 11.95 500 for 47.50

RED RASPBERRIES

No. 1, Bearing Age Plants

434—INDIAN SUMMER. Everbearing Red Raspberry. Many are planting Indian Summer as a one-crop variety because of its vigor and large size, fine flavored berries. Berries are much larger than other everbearing types and of excellent quality. The summer crop ripens very early; the autumn crop from September until frost.

10 for \$1.95 50 for \$6.75 200 for \$22.50
25 for 3.95 100 for 11.95 500 for 47.50

437—SUNRISE. Extra early. Extra quality. A new berry introduced by U.S.D.A. of unusual hardiness and resistance to disease. Stands severe winter as well as heat and drought. Ripens early, bright red color, excellent quality.

10 for \$1.95 50 for \$6.75 200 for \$22.50
25 for 3.95 100 for 11.95 500 for 47.50

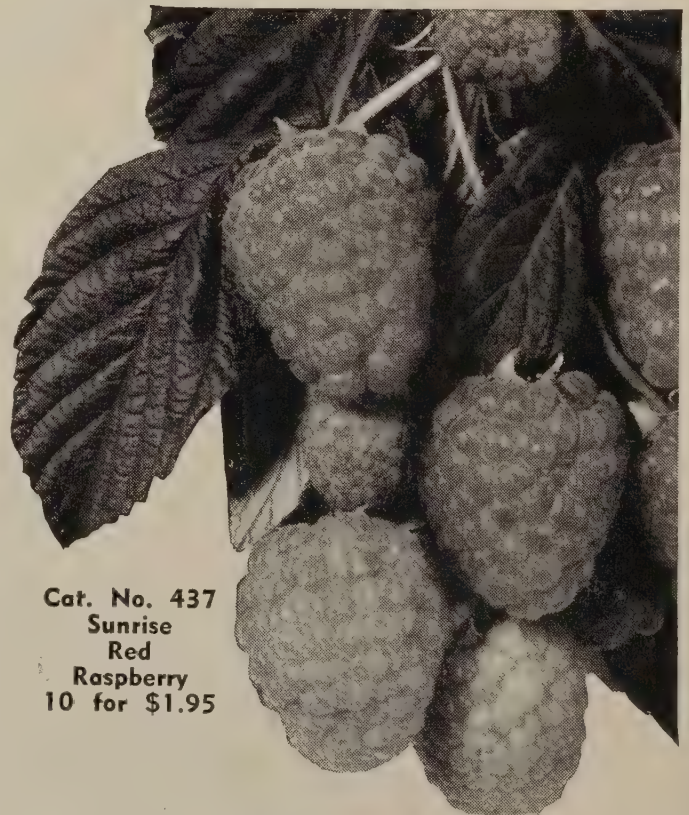
436—LATHAM. Late Red Raspberry. A superior variety which does well in all sections of the country. Adaptable to all sorts of soil conditions, climates, and sections. Cold weather has no effect on Latham as it originated in Minnesota. A great shipping and canning berry because of its wonderful keeping qualities. Produces fruit of large size, fine color, and good flavor.

10 for \$1.95 50 for \$6.75 200 for \$22.50
25 for 3.95 100 for 11.95 500 for 47.50

No. 818 HOME BERRY COLLECTION

Our selection of the best varieties for your home berry patch. The wonderful Indian Summer Red Raspberry, Cumberland Raspberry, the standard blackcap, the sensational Thornless Boysenberry, and the Eldorado Blackberry. These are all good yielders of fine quality berries. Plant them and you will have plenty of luscious berries for sauce, pies, jellies and preserves. Our fine, healthy plants will grow vigorously for you.

12 Indian Summer Red Raspberry 48 Plants
12 Cumberland Black Raspberry for \$5.50
12 Thornless Boysenberry
12 Early Harvest Blackberry
10 ASPARAGUS—FREE



Cat. No. 437
Sunrise
Red
Raspberry
10 for \$1.95

430—THORNLESS BOYSENBERRIES

Immense delicious berries with a tangy Raspberry-Dewberry flavor. Thornless plants. Delicious fresh or canned. Planted in the spring they will make 6 to 8 feet of growth first year and will produce a heavy crop the next year.

10 for \$1.95 50 for \$ 7.00 200 for \$22.50
25 for 3.95 100 for 11.95 500 for 47.50

PLEASE ORDER
BY CATALOG
NUMBER



Cat. No. 432
Morrison Black
Raspberry
10 for \$1.75
25 for 3.50



Cat. No. 434
Everbearing
Indian Summer
Red Raspberry

10 for \$1.95 25 for \$3.95

Enjoy
FRESH Berries
from Your
Own Garden



Cat. No. 436
Latham Red Raspberry
10 for \$1.95 25 for \$3.95



Cat. No. 433
Sodus Purple Raspberry
10 for \$1.95 25 for \$3.95

Cat. No. 431
Cumberland
Black
Raspberry
10 for \$1.50
25 for 2.95



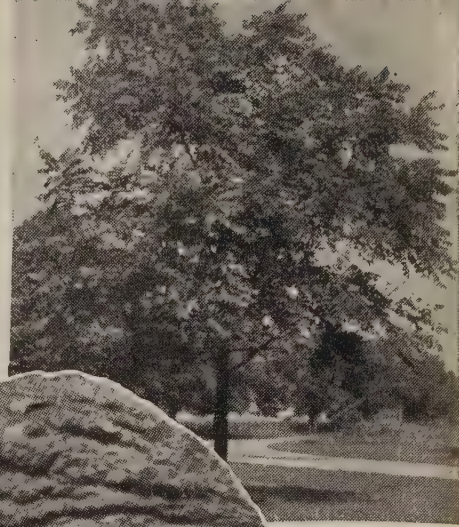
Cat. No. 430
Thornless Boysenberries
10 for \$1.95 25 for \$3.95



Thomas BLACK WALNUT

Nut trees such as Pecan and grafted Walnut serve a dual purpose. They can be planted as shade trees in the yard and at the same time produce bushels of nuts for

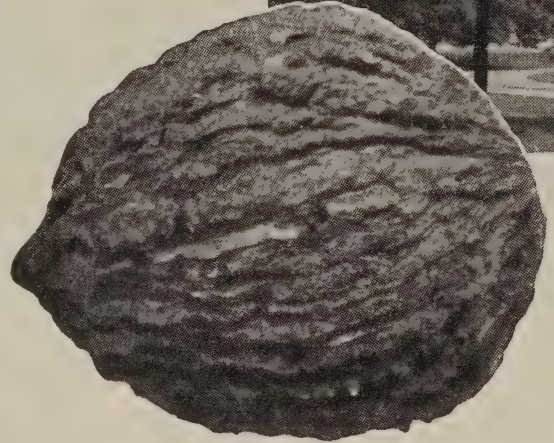
your own use. What a pleasure it is to have your own nuts without additional expense over the cost of ordinary shade trees.



No. 212

Now you can have improved, grafted Black Walnut which is giant in size and kernels come out in halves. Thomas is the fastest growing and produces the largest nuts. It bears very young, generally next year after planting. A mature tree will produce 15 to 40 bushels of nuts, which sell from \$4.00 to \$10.00 per bushel. The nuts are immense size and crack easily. A bushel of nuts crack out 10 to 12 pounds of meats. Meats are of delicious flavor. Will grow anywhere.

	Each	5 Each
4-5 ft.	\$3.25	\$3.00
3-4 ft.	2.75	2.60
2-3 ft.	2.25	2.15



Stuart PAPER-SHELL PECAN

No. 213

Hardest of the southern paper-shell varieties. Can be grown as far north as Kansas City. Nut is large, long, thin-shelled, of excellent quality. Tree is ornamental and of fairly rapid growth. A very profitable variety for commercial planting. Plant 40 feet apart.

	Each	5 for
4-5 ft.	\$3.50	\$16.25
3-4 ft.	2.95	13.75
2-3 ft.	2.45	11.25



Cat. No. 312

ROSA MULTIFLORA JAPONICA

Highly recommended for a living hedge; erosion control and wild life refuge. Completely hardy plant, 6 to 8 feet tall and nearly as wide if untrimmed. Has small thorns, white flowers in June followed by small fruits. Makes an excellent trimmed hedge, height from 2 to 4 feet. Plant 18 inches apart for untrimmed and 12 inches apart for trimmed hedge. 12-18 in., \$2.00 per 25; \$3.50 per 50; \$6.50 per 100; \$30.00 per 500; \$57.50 for 1000.

No. 214 HAZELNUT

Round, sweet kernels, easily removed and delicious for many uses. Plants are ornamental with deep green foliage and compact, bushy habit of growth. Fruits freely. Plant a group of them in the corner of your yard.

	Each	5 Each
2-3 ft.	\$1.40	\$1.30



Cat. No. 214. Hazelnuts

NUT TREE SPECIAL

No. 825

2-3 ft.

1 Thomas Walnut 1 Stuart Pecan 1 Hazelnut

All 3 for \$5.95

TUBEROUS BEGONIAS

Scarlet, Pink, Salmon, Yellow, White

Colors are scarlet, pink, salmon, yellow, and white. Exquisite beauty, easy to grow. Beautiful double blooms of perfect form carried erect on strong stems. Can be used inside as pot plants or may be planted outdoors where they have shade, and after all danger of frost is past. Include some of these in your order and you'll never regret it. No picture can do them justice.

No. 1, 1 1/2-2 in. bulbs: Each 25c; 5 for \$1.00; 12 for \$2.00

NEOSHO SUPERIOR LAWN GRASS SEED

Have Beautiful Green Velvety Lawns by Using Neosho Superior Lawn Grass Seed

All our mixtures are made up of highest quality seed, and with proper amount of moisture should give you a beautiful lawn.

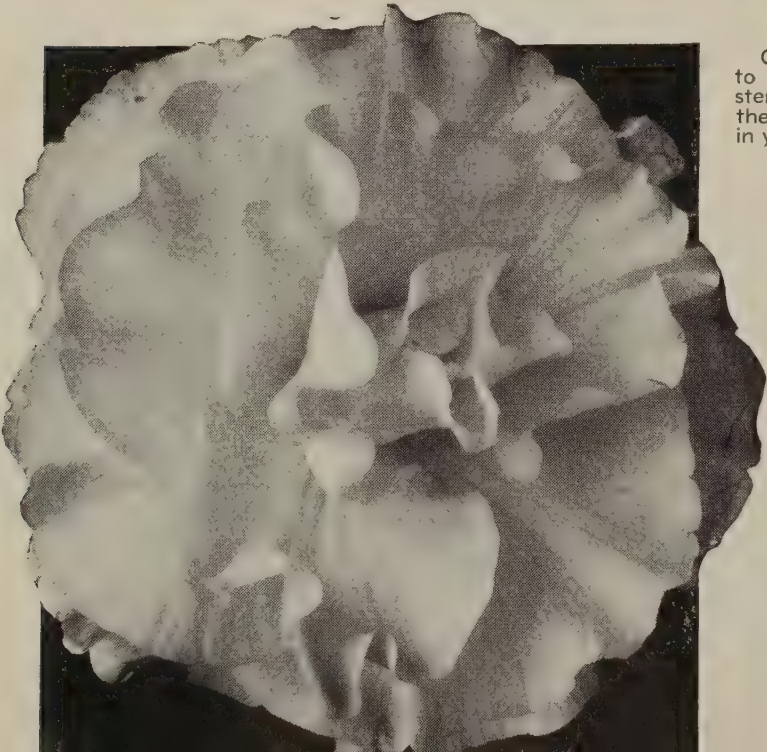
NEOSHO SUPERIOR MIXTURE. This is composed of finest seeds mixed according to our own formula to give a most satisfactory and permanent lawn. 1 lb., 90c; 3 lbs., \$2.50; 10 lbs., \$7.95.

NEOSHO QUICK LAWN MIXTURE. An inexpensive mixture of good seed for quick coverage. Best for this section of the country. 1 lb., 75c; 3 lbs., \$2.10; 10 lbs., \$6.95.

PERENNIAL RYE GRASS. A very satisfactory grass for Ozark area, as it makes a good lawn quicker than Blue Grass and is just as permanent. Bright green color. 1 lb., 50c; 3 lbs., \$1.35; 10 lbs., \$3.75.

BLUE GRASS. Fancy re-cleaned seed. 1 lb., \$1.10; 3 lbs., \$3.15; 10 lbs., \$9.95.

WHITE DUTCH CLOVER. 1 lb., \$1.50.



MONEY SAVING SPECIAL OFFERS



Freestone Peach Special No. 826

Fresh Peaches from your own trees from July 1st to September.

1 Golden Jubilee
1 Belle of Georgia
1 Elberta
1 Hale-Haven
1 Early Elberta
(Regular Value \$5.10)
One Yellow Delicious Apple tree with either order.

All 5 Trees, 4-5 ft.,
\$4.25

All 5 Trees, Super X,
\$6.25

(\$7.50 value)



Cherry Pie Special No. 824

2 Early Richmond
2 Montmorency

All 4 (3-4 ft.)
for Only **\$4.95**

All 4 (Super X)
for Only **\$6.25**

Home Orchard Special No. 823

We have made up this special for the suburban home owner who wants enough fruit for his own use. You can select your own varieties on this special.

5 Apple 2 Pear
5 Peach 2 Cherry
2 Plum
Free—3 Grapes

16 Trees, 3-4 ft.,
2-year grade,
\$10.95

16 Trees, 4-6 ft.,
2-year grade,
\$13.95



Red, White and Blue Grape Special No. 819

This assortment particularly chosen for hardiness, long season, wonderful flavor, easy to grow. An ideal assortment for every home owner.

2 Concord 2 Agawam
2 Fredonia 2 Niagara

8 Sturdy Vines for \$1.95

(Regular Value \$2.35)



Free

PREMIUM WITH EVERY ORDER!

When you send us your order for Nursery Stock you may select **free** Premiums as follows:

On Nursery Orders of \$5.00 select one of these premiums.

On Nursery Orders of \$10.00 select two.

On Nursery Orders of \$15.00 or more, select any three.

Premiums must be written on order or none will be sent, even if you notify us later. We reserve the right to substitute in case we run short on any of these premiums.

A—Dwarf Pink Spirea
B—1 Peach, 2-3 ft.
C—1 Apple, 3-4 ft.
D—2 Concord Grape
E—10 Asparagus
F—1 Pink Peony
G—3 Iris, our choice
H—10 Glads, Mixed
K—1 Lemon Day Lily

RA-PID-GRO

Liquid plant food. Contains 11 vital food elements plus vitamins. Will make your plants thrive and grow under any conditions. Easy to use. No risk of burning as it is dissolved quickly in water. One pound makes 176 pounds of liquid fertilizer (22 gallons). One pound of Ra-Pid-Gro is equal to 110 pounds of any fertilizer you may have used in the past. Feed your trees, shrubs, evergreens, flowers, vegetables.

1 lb. for \$1.25 2 lbs. for \$2.35
5 lbs. for \$4.50

GAT GUN

For applying Ra-pid-gro to lawns, etc. Attachment screws on quart Mason jar and attaches to hose. **Each \$2.25.**

WEEDONE

(2, 4-D plus 2, 4, 5-T)

A selective weed killer, non-injurious to grass. Easy to kill chickweed, dandelions, poison ivy, plantain, etc. Just add water and spray on your lawn.

8-oz. can (will cover 1,200 sq. ft.), **\$1.00.**

PEAT MOSS

Mulch with Peat Moss, to conserve moisture, keep down weeds, winter protection. Peat Moss is a very fine soil conditioner. It mellow heavy soils and helps bind sandy soils. It is a pure source of humus, needed by most soils. Use one-fourth Peat Moss mixed with soil when planting and you will get better results.

Express Only

1-bu. bag \$1.00
2-bu. bag 1.85
4-bu. compressed bale 2.95
16-bu. compressed bale 6.95

SHEEP MANURE

Dehydrated

The all organic animal manure. It is dehydrated and finely pulverized for more convenient handling. It is all plant food. No weed seed—no waste. Adds humus to the soil. One 50-lb. bag will provide sufficient fertilizer for approximately 500 sq. ft. of gardening surface or 1000 sq. ft. of established lawn. Fine for evergreens, shrubs, flowers, Roses, vegetables and lawns.

50-lb. bag, **\$1.95**

PLANT HEALTH

Use "Standard Garden Dust" for worms, insects, and fungus. A special formula that kills all eating insects. It kills Red Spider and Aphis, and controls plant diseases such as mildews, leaf spots, rusts, tomato blight, and anthracnose. An ounce of prevention is worth a pound of cure, so start your dusting when the leaves appear. Continue at regular intervals.

10-oz. Duster, 80c. Packaged in a special dust gun ready to use. Refillable.

1-lb. Can with Sifter Top, **\$1.00.**

5-lb. Package, for use in dust gun or your own dusting equipment, **\$3.75.**

DOGZOFF

Animal Repellent

Safeguard evergreens and flowers. Completely harmless to plant.

3-oz. bottle, 75c

Direct from
Grower to You **Plant**
Improved

Prices are not increased over last year. Quantity rates, however, are subject to change without notice.



Cat. No. 256. Improved Early Elberta—
Yellow freestone. Ripens July 5



Cat. No. 253. Elberta
—Yellow freestone.
Very large and pro-
ductive. Ripens Aug.
10-15



Cat. No.
260.
Red Haven
Smooth skinned
yellow freestone.
Ripens July 5



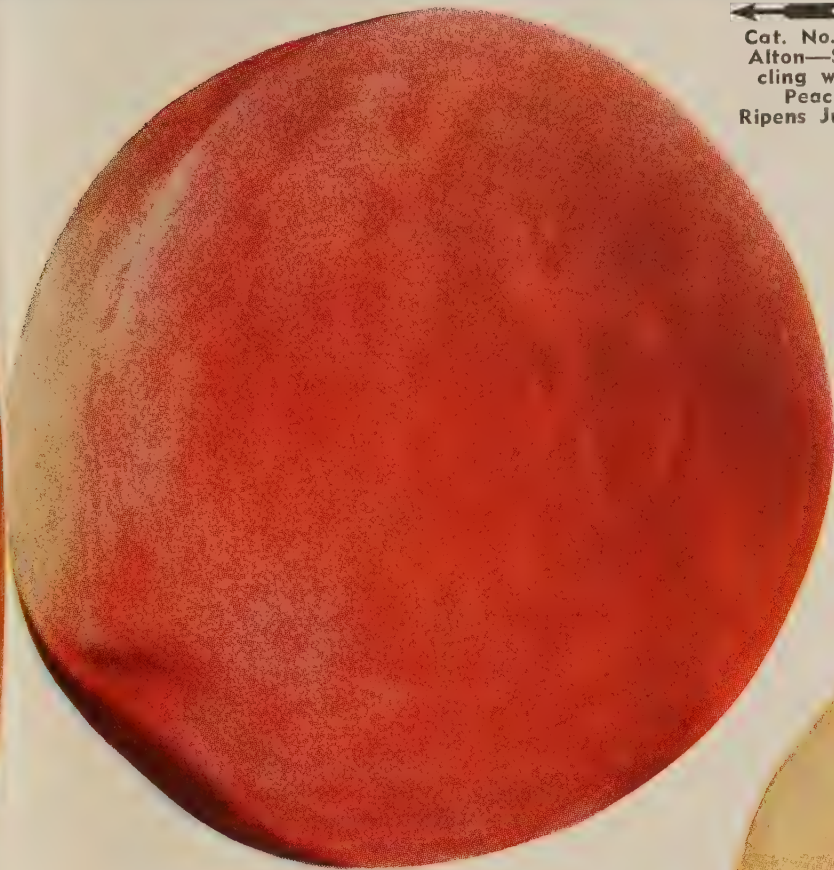
Cat. No.
251.
Belle of Georgia—
White freestone.
Ripens Aug. 1.



Cat. No.
255.
Red Gage
Elberta—
Yellow freestone.
Extra hardy. Ripens
Aug. 15-20.

NEOSHO PEACHES

Varieties Early Bearers Heavy Producers



←
Cat. No. 250.
Alton—Semi-
cling white
Peach.
Ripens July 15



Cat. No. 258. J. H. Hale—immense size; excellent quality. Yellow freestone. Ripens Aug. 5.



**No. 827
PEACH
SPECIAL**
1 of each
variety
pictured
on pages
32 and 33,
10 trees,
3-4 ft.,
\$5.25.
2 of each
variety
pictured,
20 trees,
3-4 ft.,
\$9.95

PRICES—All Varieties

	5		10		25		100	
	Each	Each	Each	Each	Each	Each	Each	Each
3/4 in., Super X	\$1.25	\$1.15	\$1.05	\$0.95	\$0.85			
1 1/16 in., 5-7 ft.	1.00	.90	.85	.80	.75			
9-11/16 in., 4-5 ft.	.85	.75	.70	.65	.60			
7-9/16 in., 3-4 ft.	.70	.60	.55	.50	.45			
5-7/16 in., 2-3 ft.	.60	.50	.45	.40	.35			

Complete descriptions on page 34.
ATTENTION COMMERCIAL GROWERS
Write for prices on larger quantities. Please specify variety, quantities, and sizes.



Cat. No. 259. Hale-Haven. Wonderful yellow freestone. Ripens Aug. 1

Cat. No. 252. Champion—
White freestone. Ripens
Aug. 1st

Cat. No. 257.
Golden Jubilee—Large
yellow freestone.
Ripens July 15



Neasha's Home Grown PEACH TREES

250—ALTON. A semi-cling, white Peach with a beautiful red blush. You'll have a crop of Alton whenever seedlings bear. Ripens about July 15th. An extremely good regular bearer.

251—BELLE OF GEORGIA. (White Freestone.) An unusually large Peach. Creamy white blushed with red; good quality. Very hardy, vigorous and productive. The most popular and widely planted white Peach. Ripens August 1st.

252—CHAMPION. (White Freestone.) Midseason. An exceptionally high quality, attractive, hardy white Peach. It has a peculiar honeyed sweetness; ideal for home use and local markets. Ripens August 1st.

253—ELBERTA. (Yellow Freestone.) Midseason. Very large, golden yellow with red cheek. Tree is very productive, yields large quantities of uniform highly colored fruit. Can be shipped or hauled to distant markets. Ripens August 10th to 15th.



Cat. No. 265. Tulip Peach

254—EARLY ELBERTA. Our own special strain of Early Elberta that we have fruited for years and subjected to every test and found it a money maker wherever grown. Ripens 5 days ahead of Elberta. A smooth rich flavor much more pleasing in taste than Elberta.

255—ELBERTA, GAGE. A wonderful improved bud sport of the Elberta Peach. Ripens 3 to 5 days after standard Elberta. Is of wonderful size and improved color. Most outstanding feature of this Peach is its resistance to disease and hardiness in bud; crops every season.

258—HALE. (Yellow Freestone.) Very large in size. Ripens August 5th just ahead of Elberta. Very firm, solid meated. Stands long shipment. Brings highest prices on every market.

259—HALE-HAVEN. A magnificent cross between the wonderful quality of J. H. Hale and the hardiness of South Haven. Wonderful size and color, and shipping qualities; hardy in bud and vigorous tree. A profit making variety you cannot afford to overlook. Ripens August 1st.

256—IMPROVED EARLY ELBERTA. The earliest of the Elbertas, ripening about July 5th. A rich golden yellow freestone of delicious flavor. A heavy bearer, wonderful shipper, reaches market early to obtain highest prices.

263—INDIAN BLOOD. (Clingstone.) Late. An old-fashioned favorite of fine flavor. Flesh is blood-red color. Wonderful for canning, pickling, and preserving.

Peach Prices—All Varieties

	5	10	25	100
	Rate	Rate	Rate	Rate
	Each	Each	Each	Each
Super X, diam. 3/4 in. . .	\$1.25	\$1.15	\$1.05	\$0.95
5-7 ft., diam. 11/16 in. .	1.00	.90	.85	.80
4-5 ft., diam. 9-11/16 in.	.85	.75	.70	.65
3-4 ft., diam. 7-9/16 in. .	.70	.60	.55	.50
2-3 ft., diam. 5-7/16 in. .	.60	.50	.45	.40

Attention commercial growers. Write for prices on larger quantities. Please specify varieties, quantities, and sizes.

264—RED BIRD. (Clingstone.) An unusually large, early commercial variety. Very firm and ships well. Creamy white, covered with bright red. Ripens July 1st.

260—RED HAVEN. A smooth-skinned, almost fuzzless, early yellow freestone Peach. Ripens uniformly, early in July. Tree is vigorous and bears so heavily, fruit should be thinned to increase size.

261—FAIR'S BEAUTY. Hardiness, great beauty, high quality, recommend this Peach for all sections. You can hardly distinguish it from Elberta in size and quality, but it ripens July 10th, 30 days ahead of Elberta. Very hardy in bud, often producing a crop when other varieties are winter-killed. Fruit is medium to large in size, flesh is firm, tender, melting and juicy. Freestone, clinging slightly when the Peach is hard ripe.

262—FRANK'S. (Clingstone.) Fine flavored, large, solid meated, yellow cling, ripening about the 5th of September. A very superior Peach because of its size, beautiful color, high quality, and high production. Fine for pickling and preserving.

257—GOLDEN JUBILEE. A beautiful yellow freestone Peach ripening 25 days ahead of Elberta, about July 15th. Good size and quality. One of the best shippers of the early varieties. Plant Golden Jubilee this year, and you will have these hardy freestone Peaches bearing for you in 2 to 3 years.

265—TULIP PEACH. Introduced by Missouri Experimental Fruit Station. The best extra early, semi-freestone grown at the Station. Ripens 6 weeks ahead of Elberta. Fruit medium to large, nearly round with good color before picking time. Short fuzz, fine texture and excellent flavor. Firm, yellow flesh, stands shipping well.

All Season Peach Collection No. 828

1 J. H. Hale	1 Belle of Georgia
1 Elberta	1 Fair's Beauty
1 Red Bird (Cling)	1 Hale-Haven

6 5-7 ft. Trees for \$4.95

Good 3- to 4-ft. Trees—All 6 for \$3.50

Neasha BUSH CHERRY

Cat. No. 50. Nanking Cherry (*Prunus Tomentosum*)

The new quick-bearing Cherry. Easy to grow; sure to produce; highly productive; good flavor. Hardy everywhere. Perfectly hardy ornamental shrub with white blossoms followed by rich red fruit which is fine for making jam, jelly and pie. Plant two or more for pollination. 2-yr., No. 1—2 for \$1.95.



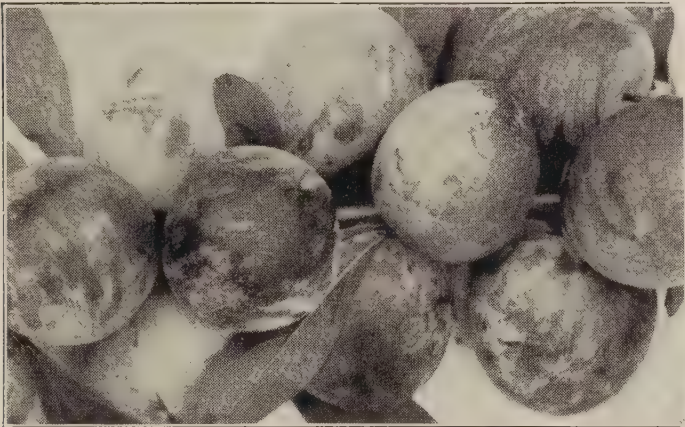
Cat. No. 50. Nanking Bush Cherries
2-yr., 2 for \$1.95

Neasha CHOICE PLUMS

PLUM PRICES

	Each	5 Rate Each	10 Rate Each	25 Rate Each	100 Rate Each
Super X, 11/16 in. (5-7 ft.)	\$1.75	\$1.60	\$1.40	\$1.20	
9-11/16 in. (4-5 ft.)	1.40	1.30	1.15	.95	.70
7-9/16 in. (3-4 ft.)	1.10	1.00	.90	.75	.60
5-7/16 in. (2-3 ft.)	1.00	.85	.70	.60	.50

ATTENTION COMMERCIAL GROWERS: Write for prices on larger quantities. Please specify varieties, quantities and sizes.



Cat. No. 243. Waneta 2-3 ft., \$1.00

- 235—AMERICAN.** Golden yellow with red check. Bears young. Produces in abundance, high quality, sweet, juicy, solid meated Plums. Free from rot, extremely hardy. Ripens July 20th.
- 236—BURBANK.** Large cherry-red Plum. Flesh amber-yellow, with rich sugary flavor; high quality and very productive.
- 237—ITALIAN PRUNE.** The favorite market Prune. Medium to large size. Dark purple, good quality; blooms late. One of the most widely grown Prunes in America.
- 238—MUNSON.** Earliest, ripening last of June. Large, yellow, good quality, tender, juicy, sweet. Bears young, producing large crops.
- 239—PRESIDENT.** The largest of all Plums. A beautiful dark purplish black with a heavy bloom. Ripens late, 10th of September. A wonderful rich flavored freestone, solid-flesh Plum.
- 240—OZARK PREMIER.** Extra large, bright red, yellow juicy flesh. Cling. Ripens August 1st. A good producer.
- 241—SAPA.** (Hansen Hybrid.) Bears first year. A large size purple Hansen hybrid, with purple flesh full of rich juice of fine flavor. Bears heavy crops annually and begins fruiting the first year after planting. Ripens middle of July.
- 242—STANLEY PRUNE.** Crop second year, ripens 10 days ahead of other Prunes. Beautiful purple-blue skin; sweet golden flesh. Freestone. The hardiest Prune for the Middle West.
- 243—WANETA.** A Hansen hybrid. Exceptionally hardy, withstanding extremely hot and dry weather. Often bears second year. Color purplish red; 2 inches in diameter.

Easy Payment Plan

There is no red tape to our Easy Payment Plan. The minimum order we can accept on this basis is \$25.00, on which a \$5.00 deposit is required with your order. The balance is paid in monthly payments of \$2.50 each. The only extra charge is \$1.00 added for carrying charge. We will handle orders up to \$200.00 on our Easy Payment Plan. The deposit and carrying charge varies with the amount of the order. Simply write for our Time Payment Blank, which gives full details. Fill it out and return with your deposit. You will receive shipment of your order at the proper time for planting. In this way you can enjoy several months growth on your plants while you are making your easy payments.

Neosho Nursery Co. Thayer, Kansas
Dear Friends: July 25, 1950

The spring of 1942 I purchased 100 Apple trees of you. Last season they bore considerable fruit and such wonderful Apples. I took first prize at our fair on Jonathan, first on Red Delicious, and second on Winesap. The Turley and Lodi Apples are surely grand too.

Garland Chrisman
Route 1, Thayer, Kans.

GOVERNMENT INSPECTED TREES

Federal and State officials have thoroughly inspected our farms and certified our nursery stock free from injurious pests and plant diseases. You may order from us and be certain of clean, healthy trees, shrubs and plants.

APRICOT

APRICOT PRICES

	Each	5 Rate Each	10 Rate Each	25 Rate Each	100 Rate Each
Super X, 11/16 in. (4-5 ft.)	\$1.95	\$1.80	\$1.70		
9-11/16 in. (3 1/2-4 ft.)	1.50	1.35	1.25	1.15	1.00
7-9/16 in. (3-3 1/2 ft.)	1.25	1.15	1.05	.95	.90
2-3 ft.	1.00	.90	.80	.75	.70

ATTENTION COMMERCIAL GROWERS: Write for prices on larger quantities. Please specify varieties, quantities and sizes.

246—IMPROVED SUPERB. (Scheining). Hardy, productive. Fruit is medium large, orange-yellow; flesh firm and of high quality. Fine for eating, sauce, preserves and pie.

NECTARINE

NECTARINE PRICES

	Each	5 Rate Each	10 Rate Each	25 Rate Each
Super X, 11/16 in. (5-7 ft.)	\$1.75	\$1.60	\$1.50	\$1.40
9-11/16 in. (4-6 ft.)	1.50	1.35	1.25	1.15
7-9/16 in. (3-4 ft.)	1.25	1.10	1.00	.90
5-7/16 in. (2-3 ft.)	1.00	.90	.80	.70

ATTENTION COMMERCIAL GROWERS: Write for prices on larger quantities. Please specify varieties, quantities and sizes.

247—SURECROP NECTARINE. A cross between Peach and Plum. Has smooth skin like a Plum and seed like a Peach. Flesh and flavor of both Plum and Peach. Quality unusually pleasing. Beautiful bright red; size about same as medium size Peach. Freestone. Bears after second year.

JUICY PEARS

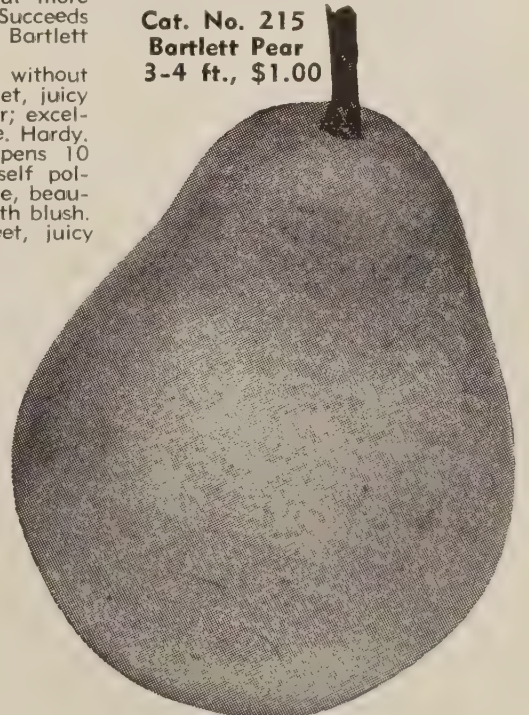
PEAR PRICES

	Each	5 Rate Each	10 Rate Each	25 Rate Each	100 Rate Each
Super X, 3/4 in. (6-8 ft.)	\$1.75	\$1.50	\$1.40	\$1.30	
11/16 in. (5-7 ft.)	1.50	1.35	1.20	1.00	.90
9-11/16 in. (4-6 ft.)	1.25	1.15	1.00	.80	.70
7-9/16 in. (3-4 ft.)	1.00	.90	.75	.65	.55
5-7/16 in. (3 ft.)	.90	.80	.70	.60	.50

ATTENTION COMMERCIAL GROWERS: Write for prices on larger quantities. Please specify varieties, quantities and sizes.

- 215—BARTLETT.** (Late summer.) The leading commercial variety; one of the most popular for dessert and canning. Flesh is white, fine grained, juicy and sweet. Tree is vigorous, very productive, hardy, bears young.
- 216—DOUGLAS.** (Early fall.) Douglas is a large, handsome Pear of Bartlett quality that ripens in early fall and comes into bearing the second or third year. Golden yellow, flushed with pink; tender, juicy, excellent flavor. Blight proof, very resistant to dry weather.
- 217—KIEFFER.** (Winter.) Large, yellow, russeted; flesh white, rather coarse. A market and kitchen variety that succeeds farther south where other varieties fail. Tree hardy, very vigorous, resistant to blight. Blooms early.
- 218—LINCOLN.** (Summer.) Large, yellow; quality good to very good; similar to Bartlett, but more resistant to blight. Succeeds farther south than Bartlett can be grown.
- 219—SEEDLESS.** A Pear without seeds or core; all sweet, juicy flesh; a great producer; excellent quality, good size. Hardy. Tree bears young, ripens 10 days after Bartlett; self pollinizer. Fruit is a large, beautiful golden yellow with blush. Flesh is tender, sweet, juicy and delicious.

Cat. No. 215
Bartlett Pear
3-4 ft., \$1.00



Neosho CHERRIES

Bear Young—Easy to Grow

SOUR CHERRIES

200—EARLY RICHMOND. The favorite early bright red May Sour Cherry. Fruit is medium size. A good canner. Tree is medium size. Ripens a week earlier than Montmorency. Plant some of each variety to give you fresh Cherries over a longer period.

201—MONTMORENCY. The most widely planted Cherry. Productive and a regular bearer. Colors early before ripe—a distinct advantage for shipping. The fruit is roundish, plump and a beautiful glowing red. It hangs in clusters, making picking easy. The fruit does not crack or rot, even in very hot weather. It hangs on without dropping after it is dead ripe. The flesh is rich, sprightly and pleasant. A good shipper and a good canner. Does not mash down in the box.



Cat. No. 201. Montmorency Cherry

SOUR CHERRY PRICES

	5 Rate Each	10 Rate Each	25 Rate Each	100 Rate Each
Super X, 3/4 in.	\$1.75	\$1.60	\$1.50	\$1.40
11/16 in. (4-5 ft.)	1.50	1.40	1.30	1.20
9-11/16 in. (3-3 1/2 ft.)	1.35	1.25	1.15	1.05
7-9/16 in. (2 1/2-3 ft.)	1.15	1.05	.95	.90
5-7/16 in. (2-2 1/2 ft.)	1.00	.90	.85	.75

ATTENTION COMMERCIAL GROWERS
Write for prices on larger quantities. Specify variety, quantity and size.

Prices are not increased over last year. Quantity rates, however, are subject to change without notice.

**BE SURE
TO SELECT YOUR
FREE PREMIUMS
FROM PAGE 31.**

SWEET CHERRIES

205—BING. Very large, black, highest quality. Mid-season.

206—BLACK TARTARIAN. Beautiful lustrous, purplish black when ripe. Medium size for Sweet Cherry. Very good quality. Very productive and a regular bearer. Early.

207—LAMBERT. Large, dark purple, firm, rich, juicy. Late.

208—LATE DUKE. Large, heart-shaped, dark red, semi-sweet variety with hardy qualities that succeeds well here in the Middle West.

209—NEOSHO NAPOLEON. A select strain of yellow Sweet Cherry. Mellow sweet flavor.

210—SENECA. Early. Black, rich sweet flavor. Best for Middle West.

SWEET CHERRY PRICES

	5 Rate Each	10 Rate Each	25 Rate Each	100 Rate Each
Super X, 11/16 in. (5-7 ft.)	\$2.00	\$1.85	\$1.70	\$1.60
9/16 in. (4-6 ft.)	1.75	1.65	1.55	1.50
7/16 in. (3-4 ft.)	1.40	1.30	1.25	1.20
5/16 in. (3 ft.)	1.25	1.20	1.15	1.10

ATTENTION COMMERCIAL GROWERS
Write for prices on larger quantities. Specify variety, quantity and size.

A Sweet Cherry planted alone is not likely to bear fruit, because it is self-sterile. Plant a Black Tartarian with any other Sweet Cherry for cross pollination.



Cat. No. 209. Neosho Napoleon

**SEE PRECEDING
PAGE (35) FOR
COMPLETE LIST
OF PLUMS AND
PEARS**



Cat. No. 240
Ozark
Premier

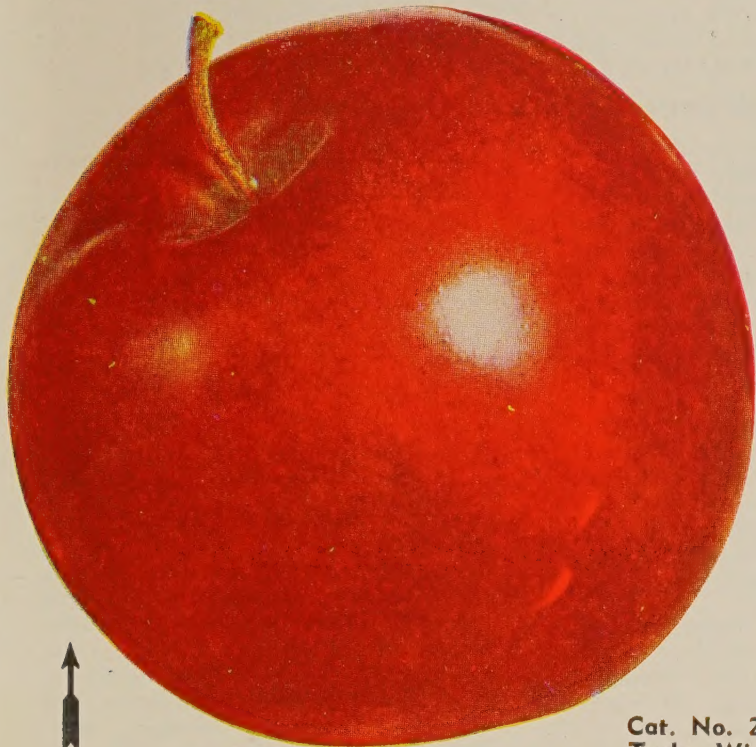


Cat. No. 216
Douglas
Pear

BE SURE TO ORDER BY CATALOG NUMBER

NEOSHO Apples

- BEAR YOUNG
- BEST VARIETIES
- BIG THRIFTY ROOTS



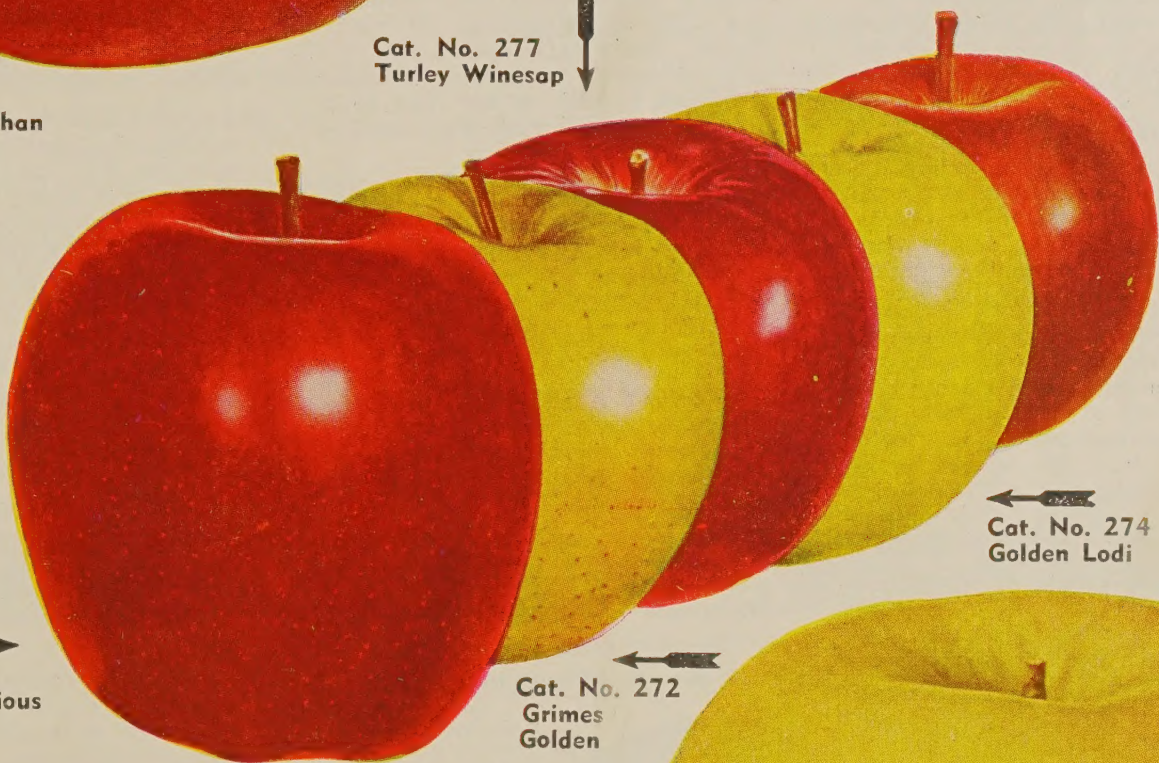
Cat. No. 273
Dark Red Jonathan



Cat. No. 275
Ruby Red Rome Beauty

Apple Special No. 830
One each of the following Apples:

Dark Red Jonathan	Yellow Transparent	Whetstone
Grimes Golden	Ruby Red Rome	Dark Red Delicious
Double Red Stayman	Beauty	Yellow Delicious
Anoka		
2-Yr., 4-6 ft.: 10 for \$5.45; 20 for \$9.95.		
2-Yr., Super X: 10 for \$8.95; 20 for \$15.95.		



Cat. No. 277
Turley Winesap

Our improved varieties eliminate necessity for color packing as they color solid 2 to 4 weeks ahead of regular varieties.

Cat. No. 284
Whetstone

Cat. No. 274
Golden Lodi

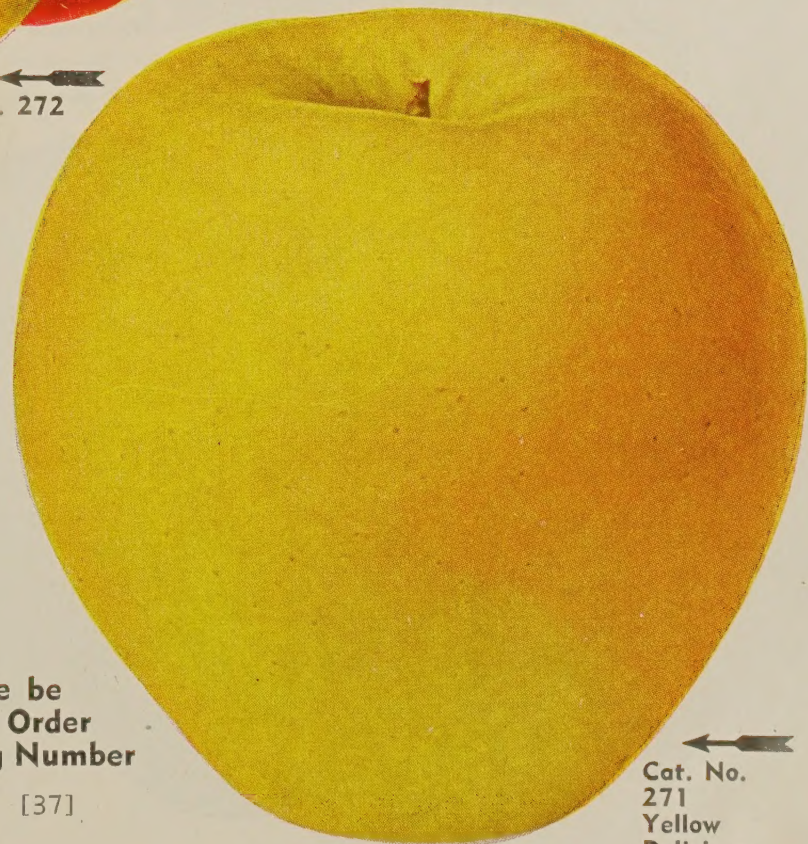
Cat. No. 272
Grimes Golden

Cat. No. 270
Dark Red Delicious

We finished picking our own Dark Red Jonathan Apple crop on Aug. 19th. Every Apple on every tree ran 100% color, eliminating necessity to color pick. Reached early market and brought top prices.



Cat. No. 279
Anoka



Cat. No. 271
Yellow Delicious

Please be Sure to Order by Catalog Number

Neosho Improved APPLE VARIETIES

Large commercial orchardists depend upon Neosho Nurseries Company for new and improved true-to-name varieties.

We have long had a reputation for supplying trees that produce profitable, productive orchards that we are zealous to maintain. Let us help you to "Growing Satisfaction."

PRICES—All Varieties

Attention commercial growers—write for prices on larger quantities. Specify variety, quantity and size.

	5	10	25	100
	Rate	Rate	Rate	Rate
	Each	Each	Each	Each
Super X, 2-yr., 6-8 ft., diam. 3/4 in.	\$1.25	\$1.10	\$1.00	\$0.80
5-7 ft., 2-yr., diam. 11/16 in.	1.00	.90	.80	.70
4-5 ft., 2-yr., diam. 9-11/16 in.80	.70	.60	.55
3 1/2-5 ft., 2-yr., diam. 7-9/16 in.70	.60	.50	.45

Can supply 1-year apple grafts in quantities of 100 or more. Write for prices.

279—ANOKA. The Old Folks' Apple. The second year, big, full-sized crop; earliest and heaviest bearing Apple. Hardy in all climates; never winter-kills. Ripens in August but can be used a month earlier. Apples are good size. Yellow, striped red.

280—BLACK BEN. (Winter.) The best of the Ben Davis family. It attains a much higher color than Ben Davis or Gano. The tree is hardier, more vigorous and more prolific than Ben Davis. Fruit is large, solid dark red.

281—SUMMER CHAMPION. A late summer Apple. Large, attractive red, and of fine quality. Tree is hardy and a heavy bearer.

282—RED DUCHESS. Attractive yellow Apple with red stripes; medium size. Profits are larger. One of the most profitable summer varieties. Bears young.

270—DELICIOUS, DARK RED. Colors a deep red 2 to 3 weeks before the common Delicious begins to take color. Bigger profits for the grower because earlier picking, earlier marketing, and more extra fancy grade.

271—DELICIOUS, YELLOW. Popular, big, beautiful, golden yellow Apple. Has a wonderful flavor, excellent quality, firm flesh, and ripens fast. Begins bearing at a very early age and is a vigorous grower, so that a six-year-old tree can have 5 or 6 bushels of apples, and a 15-year-old tree 20 to 25 bushels. Brings highest price and in demand on every market.

272—GRIMES GOLDEN. A rich golden color, fine flavor and aroma, an ideal dessert Apple, and an equally fine cooker. Easy to grow, hardy and prolific bearer.

273—JONATHAN, DARK RED. The most profitable Apple obtainable. The Dark Red Jonathan attains a brilliant red color 2 weeks before ripening, and this, in turn, gains the advantage of higher market price for the grower. Early marketing also eliminates windfalls.

274—LODI, GOLDEN. New Improved Transparent. A large waxen Apple of clear transparent color. Flesh is firm and skin thick. Keeps and ships unusually well for an early variety. Twice the size of Transparent, and the tree is a vigorous spreading grower. It ripens July 1st.

275—RED ROME. An improved Red Rome Beauty. Color of fruit much brighter and a solid red. Produces much higher percentage of fancy Apples. Bears at an early age. Tree is a vigorous strong grower. Because it blooms a week or ten days after other varieties, it more often escapes spring frost.

276—DARK RED STAYMAN WINE-SAP. The Neosho Dark Red Stayman is a marvelous improvement over many Stayman Apples; has more color and keeping qualities. It is a solid dark red, which makes it a universal favorite.

277—TURLEY WINESAP. A truly fine quality Apple of the Stayman type, which positively does not skin crack. A beautiful red color. You will find it a profit maker.

Prices are not increased over last year. Quantity rates, however, are subject to change without notice.

ALL-SEASON APPLE SPECIAL
No. 837

Finest varieties to give you apples from June to October.

5 Sturdy Trees

Yellow Transparent	Yellow Delicious
Jonathan	Stayman Winesap
Red Delicious	Stayman Winesap

3-5 ft. \$2.95

283—WINESAP, OLD FASHION IMPROVED. An improved strain. A good shipper and an exceptionally good keeper in ordinary and cold storage. Splendid bright red, indistinctly striped dark purplish red; good quality. A much larger Apple of the same wonderful qualities as Old Fashion Winesap. Medium size; hardy; heavy regular bearer.

284—WHETSTONE. A wonderful new variety of Jonathan strain crossed with Ben Davis and Delicious. Highly productive, large red Apples that hang on the tree until Christmas if necessary. An excellent keeper. One of the best Apples for baking. Very profitable for commercial orchards.

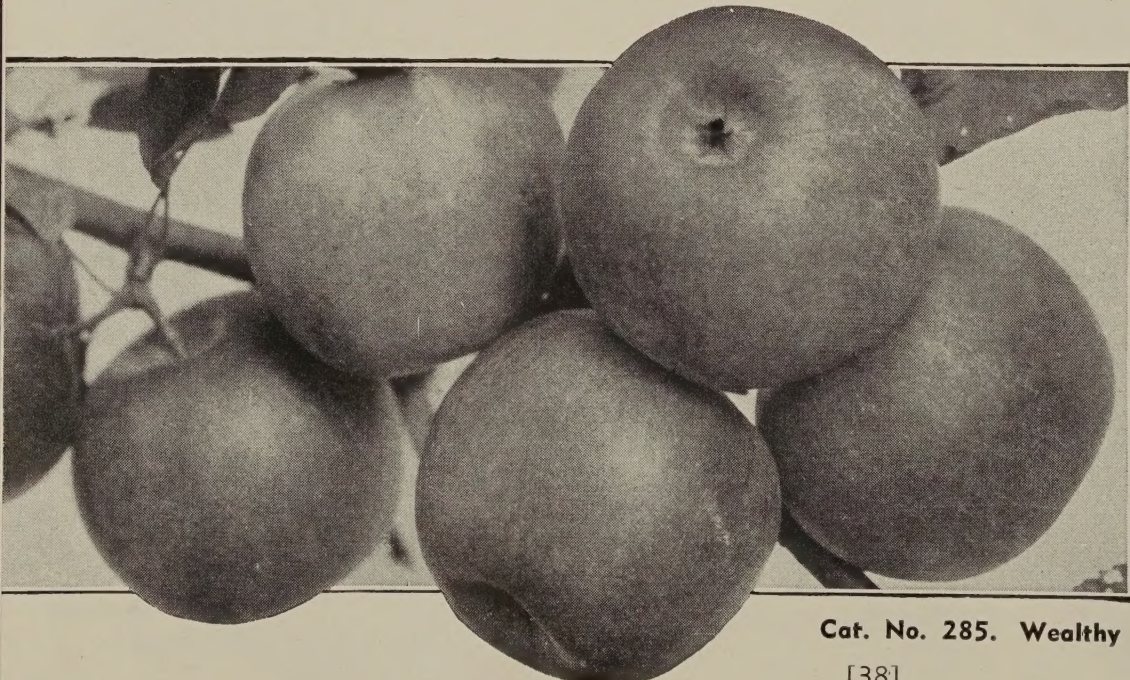
285—WEALTHY. (Late Summer.) A most dependable and widely planted late summer Apple; bright red striped; medium to large size; ripens over a long season. Very good quality. Very hardy; bears young.

286—WILLOW TWIG RED. New Improved Strain. A new selected sport of Willow Twig of larger size, uniform, symmetrical, and unexcelled color. Keeps in storage until May without scalding or breaking down.

278—YELLOW TRANSPARENT. (Early Summer.) Extra early Apple; medium size, a beautiful clear yellow. Unexcelled for pies, tarts, and apple sauce. Tree extremely hardy, upright, compact grower; often used as a filler; reliable cropper.

287—RED YORK. New Improved York Imperial, inheriting all good qualities of the old variety; heavy bearer, easy to handle and stands late storage. Fine commercial variety. Has 100% color early in season, making a beautiful appearance while still firm.

288—VIRGINIA CRABAPPLE. One of the best jelly Crab Apples. Medium size, golden yellow. A late bloomer and prolific bearer, seldom failing to have a crop. Will produce crops with as little attention as any Crab Apple that we know.



Cat. No. 285. Wealthy

DWARF APPLE TREES



Cat. No. 228. 2-Yr. Dwarf Yellow Delicious
Already Bearing

DWARF APPLE PRICES

225 Dark Red Jonathan 227 Yellow Transparent
226 Red Delicious 228 Yellow Delicious
3-4 ft., each \$3.00; 4 for \$10.50

THE IDEAL TREE FOR EVERY HOME

Dwarf apple trees are highly prized for the small garden where space is limited, as they can be planted 10-12 feet apart. Start producing fruit the first or second year after planting.

Our stock is budded on the famous Malling Rootstock, to insure a permanently dwarf tree. Trees are only 10 feet high at maturity. They may be used wherever a flowering tree is wanted as they are also extremely decorative in the spring when full of bloom. Remember, the trees are dwarf in size, but they will bear full size fruit in great abundance.

We offer the above varieties. It is a good idea to plant two or more for cross pollination.

BACK YARD FRUIT SPECIAL No. 829

1 Dwarf Apple, 3-4 ft.
1 Standard Montmorency Cherry, 3-4 ft.
1 Standard Bartlett Pear, 3-4 ft.
Two Concord Grapes Free

All Three
Trees for
\$4.95

Attention Commercial Orchardists

We are growing both Virginia and Hibernia understock.

The Iowa State University at Ames, Iowa, has done wonders, and highly recommends improving the hardiness, productiveness, and early bearing of commercial orchards by top working desired varieties onto Virginia and Hibernia Crab understocks. Hence we offer both Virginia and Hibernia Crab.

	10	25	100
	Rate	Rate	Rate
2-yr. branched, 5-7 ft.	\$0.80	\$0.70	\$0.65
2-yr. branched, 4-6 ft.	.70	.60	.50
1-yr. whips, 3-4 ft.	.50	.40	.35

DWARF PEAR TREES

LARGE DELICIOUS FRUIT; BEAR YOUNG

These attractive small trees require little space yet often bear the second year after transplanting. Fruit is top quality and often larger than from standard trees. Ideal for the small yard or garden. We offer one variety only.

BARTLETT—Cat. No. 220
2-yr., 3-4 ft. Each \$3.00 4 for \$10.50

Please Don't Forget

Be sure you have listed correct catalog number on your order. Write variety name as well as number. Be sure you have listed **free** premiums you desire. Be sure your name and address is written plainly.

Cat. No. 220. Dwarf Bartlett Pear

COMPLETE INDEX

Althea	10, back cover
Apple	37, 38
Apple, Dwarf	39
Apricot	35
Asparagus	24
Baby Roses	22, 23
Begonias, Tuberous	30
Blackberries	28
Black Raspberry	28, 29
Boysenberries	29
Bush Cherry	35
Cannas	17
Chrysanthemums, Large Flw. and Dwarf	3, 4, 5
Clematis	16
Climbing Roses	22, 23
Cherry Trees	35, 36
Crabapple	38
Currants	24
Dahlias	14
Dwarf Fruit Trees	39
Euonymus	15
Everbearing Strawberries	27
Fertilizer	31
Floribunda Roses	22, 23
Glads	14, 17
Garden Dust	31
Gooseberries	24
Grapes	25
Grass Seed	30
Hazelnut	30
Hedge	7, 30
Hemerocallis	17
Honeysuckle	10, 16, back cover
Horseradish	24
Iris	15
Ivy	16
Lilacs	14

Lilies	17
Magnolias	12
Multiflora Rose	30
Nectarine	35
Patented Roses	cover, 18, 19, 23
Pecan Trees	30
Peach Trees	32, 33, 34
Pear Trees	35, 36
Pear Trees, Dwarf	39
Peat Moss	31
Peonies	15
Perennials	3, 4, 5, 6, 40
Phlox	40
Plum Trees	35, 36
Postage Rates	2
Premiums	31
Raspberries	28, 29
Red Raspberry	28, 29
Rhubarb	24
Roses	cover, 18, 19, 20, 21, 22, 23
Shade Trees	13
Shrubs, Flowering	8, 9, 10, 11, 14, 40
Spiraea	7, 9, 11
Sprays	31
Strawberries	26, 27
Terms	2
Time Payment Terms	35
Trees, Flowering	12
Trees, Fruit	32, 33, 34, 35, 36, 37, 38, 39
Trees, Nut	30
Trees, Shade	13
Tuberous Begonias	30
Vines	16
Walnut Trees	30
Weed Killer	31
Wisteria, Vine	16
Wisteria, Tree	12





No. 60—Honeysuckle, Heckrottii

Cat. No. 60
**HECKROTTI
 HONEYSUCKLE**
 (Everblooming)

Bright flame-pink and creamy gold two-toned flowers. Its everblooming qualities make it particularly desirable. May be grown either as a vine, or, by proper pruning, can be trained as a bush, 3-4 ft. tall.

	Each	3 for
Super X	\$0.80	\$2.25
Select	.65	1.80

SHRUB ALTHEA
 (Rose of Sharon)

A fine shrub for the border or screening an unsightly view. Large, holly-like blossoms from July till frost.

No. 12—Pink	No. 46—Purple	
No. 13—Red	No. 47—White	
	Each	All 4 Colors
Super X	\$0.80	\$2.75
Select	.65	2.35
Post Size	.50	1.75



Shrub Althea

Mary Louise

Salmon Glow

- No. 550—Frau Alfred von Matner
- No. 551—Irene
- No. 552—Mary Louise

Each 40c 3 for \$1.00

- No. 553—Royal Purple
- No. 554—Salmon Glow
- No. 556—Caroline Vandenberg

6 for \$1.85 12 for \$3.50

Frau Alfred von Matner

PHLOX

for Beautiful
 Bloom



Royal Purple

Phlox Special

Cat. No. 807

1 Each of Group of 6 Shown Above

Only \$1.65

2 Each of Group Shown ONLY \$3.00

Caroline Vandenberg

Irene